

All-in-One Access Control Terminal

ACT-08A

8.4" SVGA Intelligent Access Control Terminal

The advanced, easy-to-use ACT-08A fanless touch-screen panel PC all-in-one control terminal reads both MIFARE and EM tags and transponders. The fanless ACT-08A panel PC are built on low-power, low-heat x86 Intel® 910GML or VIA CX700M chipsets. The x86 ACT-08A panel PC are more flexible than the traditional RISC-based control terminals. The x86 architecture enables system developers to integrate sophisticated time attendance, access control and/or prepaid card software on the ACT-08A for implementation in the following areas:

- Door Access
- Time Attendance
- Cashless payment for vehicle, ticket, membership club, photocopying, dining, laundry...etc.
- Parking Access control



Features

- **8.4" TFT-LCD with Resistive Touch Screen**
8.4" SVGA (800x 600) 400 nits high brightness LCD monitor with robust 4-wire resistive touch screen enables the most convenient access and control
- **Fanless 1.0 GHz Intel® Celeron® M processor with 512 KB L2 cache or 1.0 GHz ULV VIA Eden processor**
- **Integrated RFID Reader in front of the Panel**
For MIFARE 13.56 MHz or EM 125 KHz RFID tag
- **300K pixel Camera up to VGA resolution (640 x 480)**
- **Built-in microphone**
- **Wireless Connection 802.11 b/g wireless LAN Module (internal PCIe mini card interface)**
- **One CF Type II Slot**
- **Bluetooth Connectivity**
- **Mounting Panel, Wall, Stand and Arm mounting Compliance (VESA 75 mm x 75 mm)**



All-in-One Ready to Run

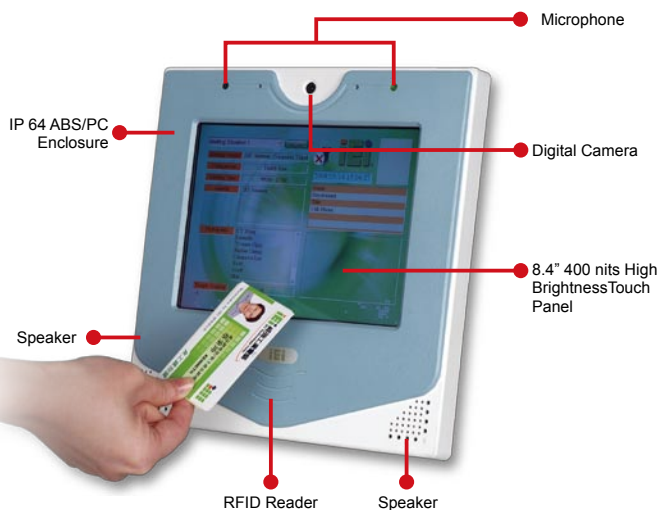
The x86 ACT-08A all-in-one panel PC with Windows CE and Windows XPE operating systems is easily integrated with data intensive applications including voice recognition, face recognition etc. The ACT-08A with an 8.4" touch panel is a complete turnkey solution that comes with an RFID reader digital camera, microphone, two speakers, built-in Wi-Fi and Bluetooth module.

Fanless

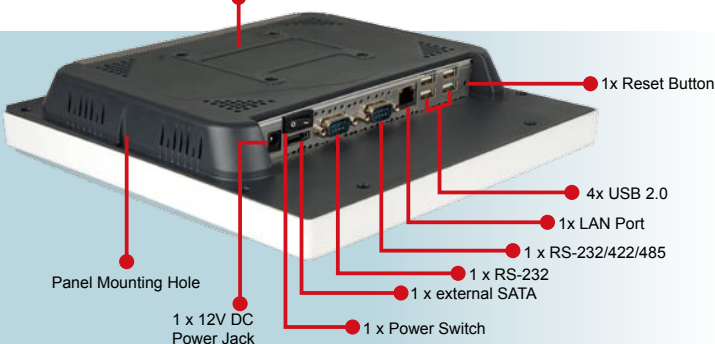
The fanless ACT-08A systems have less downtime and extended operational lives as they are not susceptible to overheating problems caused by fan failures.

Rugged Design

The rugged ACT-08A systems combine IP 64 compliant front panels with anti-shock and anti-vibration shields to ensure the system is secured against vandalism and protected against extreme environmental conditions.



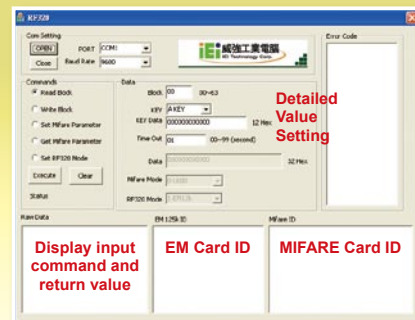
VESA 75 Compliance



Programmable RFID Support

IEI provides specific RFID software utility configuration instructions including how to:

- Read from the MIFARE card
- Write to the MIFARE card
- Set MIFARE card reader parameters
- Read MIFARE card reader parameters
- Set card reader type detection



Display input command and return value

EM Card ID

MIFARE Card ID

Complete Solutions for You

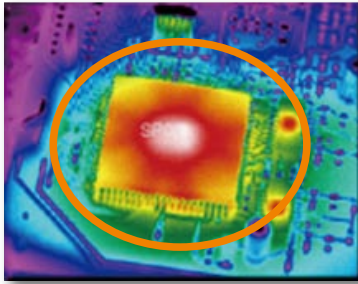
A. ACT-08A-9103

▶ 8.4" SVGA High Performance Access Control Terminal



Embedded High Computing Performance

The slim Intel® 910GMLC powered ACT-08A-9103 is a high-performance, low-power information access control terminal. The ACT-08A-9103 is ideal for processing-intensive applications that require superior computing performance.



With low power consumption benefit, BGA type enhances thermal performance and system stabilities significantly.

Processor	Intel® Celeron® M 1.0 GHz/ 512k Cache
Chipset	Intel® 910GMLC
Memory	one 200-pin 2GB (maximum) DDR2 SO-DIMM

B. ACT-08A-CX2

▶ 8.4" SVGA Multimedia Enjoyment Access Control Terminal



Flawless digital media playback with ultra-low CPU-utilization

A VIA CX700M chipset is embedded in the ACT-08A-CX2. The VIA UniChrome™ Pro II graphic core in the VIA CX700M supports popular digital video and audio formats.

The graphic core employs a multi-faceted approach to displaying multimedia content, implementing a number of advanced tools at every stage of video processing. These include integrated MPEG-2, MPEG-4, and WMV9 decoding, for flawless digital video playback with ultra-low CPU-utilization.

Without Hardware Decoder

- Lagged image with Higher CPU usage



With Hardware Decoder

- Good image quality with Lower CPU usage



Processor	VIA Eden 1 GHz ULV
Chipset	VIA CX700M
Memory	one 200-pin 1GB (maximum) DDR2 SO-DIMM

Expand the Opportunities with RFID

The latest RFID identification reader enables the ACT-08A to be integrated into applications with sophisticated automated identification requirements.

Diagram of ACT-08A with RFID

The RFID chip communicates with the reader through RFID induction technology. These tags require close proximity to an antenna to complete a transaction. They are often used when transactions must be processed quickly or hands-free.

ACT-08A RFID Reader



Transponder (RF tag)



RFID tags come in a wide variety of shapes and sizes: Plastic/paper Card, Key Fobs, ABS/PVC Tag, clear tag...etc, assist to expand more applications.

Compatible with EM and MIFARE!



Built-in RFID Module

The RFID tag reader is fully protected in a very low-profile enclosure in the front of the ACT-08A to identify objects using radio-frequency communication techniques and easily for sensor the common smart cards: MIFARE/EM card.

RFID Card Categories

	MIFARE Card	EM Card
Effective Sensing Distance	5cm (max)	10cm (max)
Frequency Band	13.56 MHz	125 KHz
Applications	MIFARE Card with 1.0 kByte of memory ideal for more secure applications such as parking, vending and employer cards or as a stored value card.	Ideal for storage id information etc. Student identification, electronic passport, vending, parking and tolls are common applications for contact-less cards.

Advantages

- Non-contact
- Non-line-of-sight nature of the technology

RFID systems are distinguished by frequency ranges

RFID Category	Frequency band	Benefits	Drawbacks
LF	< 135 MHz	Works well around water and metal	<ul style="list-style-type: none"> ● Short read range ● Slower read rate
HF	13.56 MHz	Low cost	Higher read rate than LF
UHF	860 MHz to 930 MHz	EPC standard built around this frequency	Does not work with items of high water or metal content

* Operating range depends on reader power and operating environment

Multi-Device Application Possibilities

► Identification

The ACT-08A integrates the RFID reader in the front panel making the ACT-08A ideal for digital identification applications.

◎ Library RFID Management System



◎ Membership Management



◎ School Student Attendance Monitoring



► Commercial Transaction

The ACT-08A all-in-one access control terminal is easily integrated into automated payment systems integrated at self-service gas stations, in vending machines or at cashier terminals in stores. The ACT-08A also facilitates pre-paying household utilities, paying parking meters etc.

◎ Digital signage and payment system



◎ Transportation Payment System



◎ Vending Machine



Parking Lot Entrance Control

► RFID Automated Parking Control System

The RFID controller unit enables the ACT-08A to be implemented in automatic toll collection systems to ensure parking fees are paid. The ACT-08A can be used to access and control a database and monitor the toll collection transaction history.



◎ We Offer

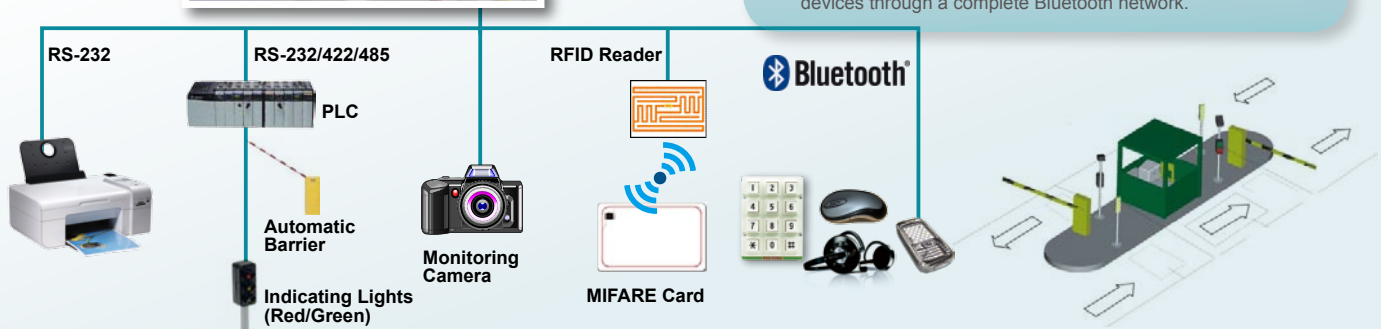
• Serial port for Data Transmission

We provide Two independent RS-232 and RS-233/422/485 serial ports for connecting data acquisition equipment and many other serial devices ACT-08A.

	RS-232	RS-422	RS-485
Mode of Operation	Single ended	Differential	Differential
Maximum Cable	50 Feet	4000 Feet	4000 Feet
Maximum Data Rate	20 kb/s	10 Mb/s-100 Kb/s	10 Mb/s-100 Kb/s

• Bluetooth Wireless Connectivity

Bluetooth module integrated into the ACT-08A all-in-one panel access control terminal transmits information between peripheral devices through a complete Bluetooth network.



Access Control Door System

The two-in-one EM/MIFARE compliant RFID reader installed in the ACT-08A x86 based panel PC supports sophisticated security applications. Advanced third-party voice and face recognition software can be integrated with the embedded camera and microphone to enable the development of complete security systems to protect restricted environments in banks, government buildings and other sensitive areas.

300K pixel Camera up to VGA resolution (640 x 480)

Digital Microphone

5cm~10cm(max) MIFARE/EM Card

Speakers

Bluetooth

Bluetooth Connectivity
Bluetooth infrastructure eliminates the use of wires or line-of sight.

• Face Recognition
The digital camera captures the image of a person's face and compares facial contours and other facial features with those stored in a database in a few seconds.

• Voice Recognition
The microphone captures the voice of a person and compares the signature frequencies with those stored in a database.

• High quality hands-free speakerphone
Talk with visitors while they wait outside.

• We Offer

- x86 architecture that is easy for system integrator application development
- Bluetooth Connectivity

Healthcare Solutions

The ACT-08A with Radio Frequency Identification (RFID) technology applied in patient care in hospitals and healthcare facilities can identify and track patients, objects, and assets, and speeds up or eliminates many manual operations in checking and processing patients.

Medication Tracking System
Monitoring the entire flow of medication use, from shipment to administration helps prevent medical mistakes.

Asset Tracking
Attaching an RFID tag to each piece of equipment and strategically locating ACT-08A readers throughout the area of operations where the hardware is used.

Family Access Control to Babies in Neonatal Care
After authorization, families have the ability to view details about their babies on the ACT-08A outside the baby care room.

• We Offer

- Compact Fanless System
- Optional Uninterruptible Power System
Protecting your ACT-08A from damage in medical environments is critically important. Uninterruptible power supplies reduces the risk of losing valuable data when power failures occur.

Mobile PDI

WiFi CERTIFIED

Wireless Access Point

• AUPS-A10/A20 Optional Uninterruptible Power Systems

Patient Tracking

Wristband (with space to insert small paper card tag)

Specifications

Model	ACT-08A-9103	ACT-08A-CX2
LCD Size	8.4"	
Max Resolution	800 x 600	
Brightness (cd/m ²)	400	
Contrast Ratio	500:1	
LCD Color	262 K	
Pixel Pitch (mm)	0.213 (H) x 0.213 (V)	
Viewing Angle (H-V)	120° / 100°	
Backlight MTBF	50000 hrs	
SBC Model	AFLMB-9103-R10	AFLMB-CX2-R10
CPU	Intel® Celeron® M processor (1.0GHz) with 512 KB L2 Cache	VIA EDEN 1GHz ULV
Chipset	Intel® 910GML E	CX700M
RAM	One DDRII SO-DIMM Up to 2GB	One DDR II SO-DIMM up to 1GB
I/O Ports	1 x RS232 COM Port 1 x RS232 or 422/485 COM Port 1 x Giga LAN 4 x USB 2.0	1 x external SATA 1 x Power Switch 1 x Reset Button 1 x Power Jack
Construction Front Panel	ABS + PC Plastic front frame	
Construction Chassis	Aluminum Chassis	
Power Adapter	60 W Power Adapter	48 W Power Adapter
LED Function	1 x LED on Front Panel for Power ON/OFF	
Mounting	Panel, Wall, Stand and Arm mounting, VESA 75 x 75mm	
Color	Blue and White	
Dimension (WxHxD) (mm)	251.72 mm x 244.69 mm x 53.3 mm	
Operation Temperature (°C)	0°C ~ 45°C	0°C ~ 45°C
N/G Weight	1.1 kg	1.1 kg
IP Level	IP64	
Safety & EMI	CE / EMC / FCC / CB / CCC	
Power Consumption	48W	38W

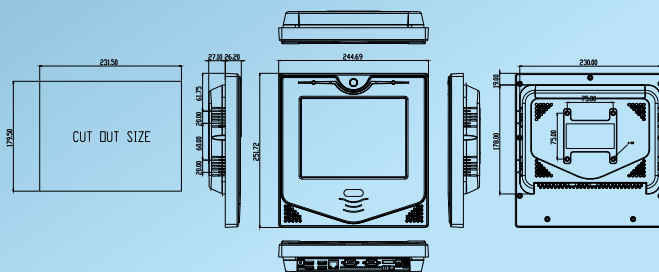
Ordering Information

Part No.	Description
ACT-08A-CX2-E10G/WT-R/512MB	8.4" 400cd/m ² SVGA fanless panel PC with VIA Eden 1GHz ULV CPU, 512MB DDR2 RAM, 802.11 b/g wireless module, MIFARE & EM RFID module, touch screen, bluetooth, RoHS
ACT-08A-9103-10G/WT-R/1GB	8.4" 400cd/m ² SVGA fanless panel PC with Celeron® M 1GHz 512KB cache CPU, 1GB DDR2 RAM, 802.11 b/g wireless module, MIFARE & EM RFID module, touch screen, bluetooth, RoHS

Options

	ACT-08A-CX2	ACT-08A-9103
Panel Mounting Kit	AFLPK-08	
Wall Mounting Kit	AFLWK-12	
ARM	ARM-11-RS / ARM-31-RS	
STAND	STAND-B08/STAND-100-RS / STAND-150-RS	
OS	Win CE 5.0	ACTCF-08-CX2-CE ACTCF-08-9103-CE
	Win CE 6.0	ACTCF-08-CX2-CE060 ACTCF-08-9103-CE060
	Win XPE	ACTCF-08-CX2-XPE ACTCF-08-9103-XPE

Dimensions



Headquarters

威強工業電腦股份有限公司 IEI Technology Corp.
 No. 29, Jhongsing Rd., Sijhih City, Taipei County, 221, Taiwan
 TEL : +886-2-86916798 FAX : +886-2-66160028
 sales@ieiworld.com www.ieiworld.com

America

IEI Technology USA Corp.
 168 University Parkway, Pomona, CA 91768
 TEL : +1-909-595-2819 FAX : +1-909-595-2816
 sales@usa.ieiworld.com www.usa.ieiworld.com

China

威強工业电脑 IEI Technology (Shanghai) Co., Ltd.
 上海市闵行区宜山路 1728 号 3 楼
 3F No. 1728 Yi-Shan Road, Min-Hang, ShangHai, China
 TEL : +86-21-3462-7799 FAX : +86-21-3462-7798, 3462-7797
 sales@ieiworld.com.cn www.ieiworld.com.cn