



ISDM-121GX



DM-121GXS



LCD-KIT121GX

12.1-inch XGA High Resolution Monitors

The 12.1-inch XGA Touchscreen Monitor features:

- 12.1-Inch touch monitor Supports resolutions up to a maximum of 1024 x 768 (XGA) to show more information and image details. view more information and detail
- 450 nits increased brightness and 700:1 high contrast delivers clearer images
- DVI-D and Analog VGA input interface for comprehensive usage
- Software OSD supported
- OSD lock secures your settings
- M models support 9~36V DC power input for mobile application (Optional)

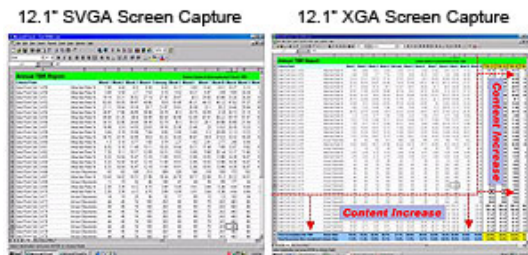
The 12.1-inch XGA touchscreen touch monitor series delivers high image quality, suitable for advanced graphics display and video playback, along with DVI, VGA and optional 9~36V DC power input extends the applications in factory automation, ATM, POS and so on.

- [Better Image](#)
- [Software OSD for IEI LCD Monitors](#)
- [Specifications](#)
- [Options](#)
- [Datasheet of LCD-KIT121GX](#)
- [DC Power Input for Mobile Application](#)
- [IEI Quick Mounting Technology](#)
- [Ordering informations](#)
- [Datasheet of DM-121GXS](#)
- [Datasheet of ISDM-121GX](#)

Better Image

12.1" XGA High Resolution

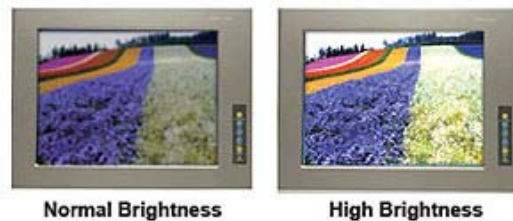
IEI 12.1-inch "X" model monitors support higher XGA resolutions and smaller pixel pitches (0.24mm versus 0.24mm) to deliver great computer displays.



The 12.1" XGA models with higher resolution allows more viewable content so the user does not have to scroll as much to view the entire spreadsheet and thereby increase work efficiency

High Brightness:450cd/m2

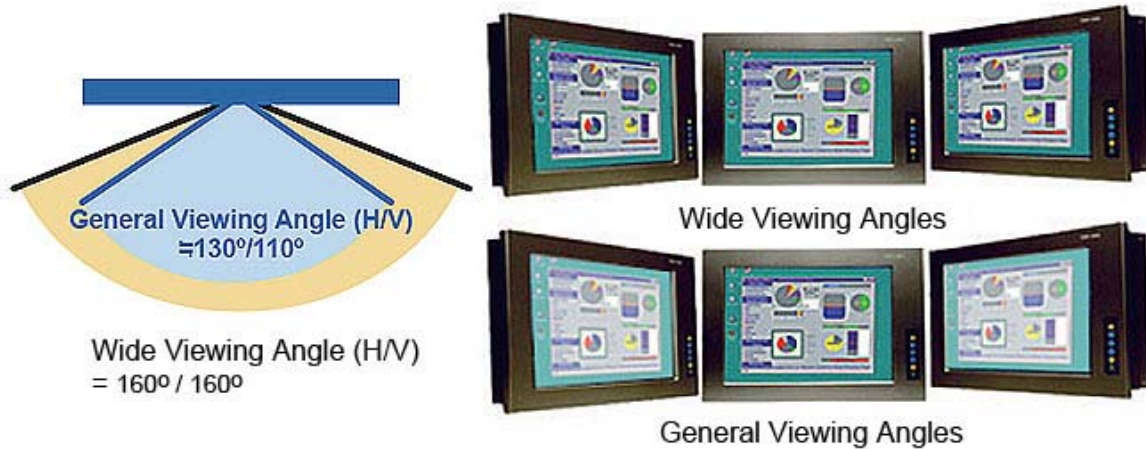
With a luminance of 450 cd/m², the "X" model monitors offer an improvement over the 250 to 300 cd/m² luminance typically available with other 12.1 -inch TFT LCD modules.



Bright TFT LCD display makes the screen bright and clear for operators, therefore reducing the possibility of making misjudgments.

Wide Viewing Angles:160°

Typical small size monitors only support 130°/110° (H/V) viewing angle, but the “X” model monitors can support maximum viewing angle up to 160°/160° (H/V). Wide viewing angles ensures the brightness and color seen remain the same when the screen is viewed from the side.



▲ TOP

DC Power Input for Mobile Application

Optional 9~36V DC power input

IEI monitor “M” models support 9~36V DC power input. Factories and mobile environment such as cars and engineer vehicles usually use not only 12V but also 24V DC as power source, 9~36V power input solution can be adapted for more appliances.



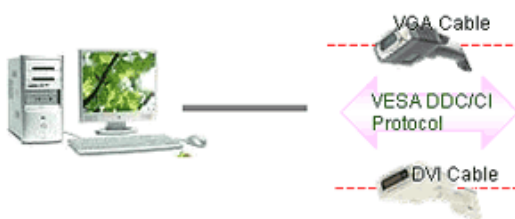
▲ TOP

Software OSD for IEI LCD Monitors

SmartOSD

IEI smartOSD is an intelligent and easy to use proprietary On-Screen-Display (OSD) software package especially designed for IEI display monitors. It delivers excellent performance and flexibility over hardware OSD solution in the monitor unit. The user can adjust the monitor from the smartOSD in the Windows environment from the remote system instead of making adjustments on the front panel. The smartOSD allows you read and change such monitor settings as brightness, contrast, color and more enhanced features

Directly controls IEI display device through standard video cables !



FEATURES

- Excellent performance and flexibility over hardware OSD
- Low cost implementation for existing monitors
- No limitations to distance
- No additional circuits are required in the PC.

Remote System

Various Remote Management Functions

- EDID Reading
- Image/Color/Display Setting
- Power Management
- OSD Lock/Unlock



Overcome Operation Obstacles

Distance, location and multiple display units no longer present any obstacles when controlling the monitors with the smartOSD.

Multiple control Displays



Untouchable Location



Remote Location

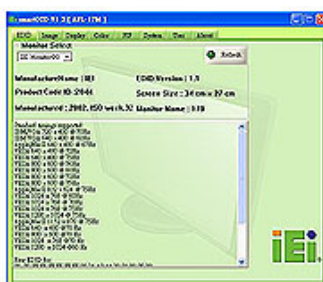


100% Compatible With VESA DDC/CI Protocol

IeI LCD monitors are implemented with the VESA DDC/CI protocol and the standard VESA Monitor Control Command Set (MCCS). Compliance software for designing displays compatible with VESA's DDC/CI and MCCS standards are easily modified and applied in other application programs.

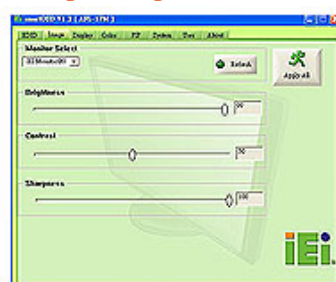
Various Remote Management Functions

1. EDID



EDID contains basic information about the monitor and its capabilities.

2. Image Setting



Brightness
Contrast
Sharpness

3. Display Setting



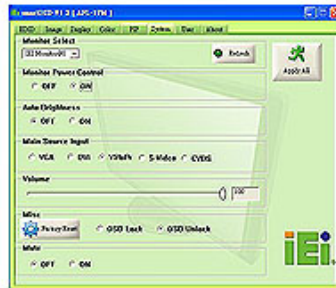
Auto Adjust
Phase
Clock

4. Color Setting

5. System Setting

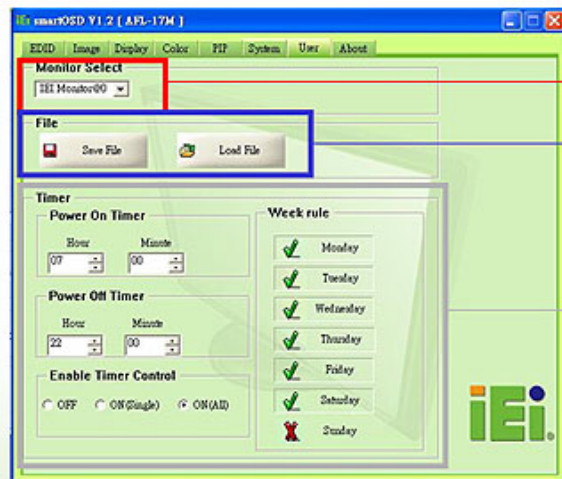


User Red Gain
User Green Gain
User Blue Gain
Color Temperature
Gamma



Monitor Power Control
Auto Brightness
Misc (OSD Lock/Unlock)

6. Monitor Power Management and File Saving



Multiple Monitor OSD Setting Control

Selects the monitor unit for which the system parameters will be adjusted

OSD Setting Saving

Selects the monitor unit for which the system parameters will be adjusted

Monitor Power Management

Setting the monitor power on/off by time and week

Modifiable for Customization Service

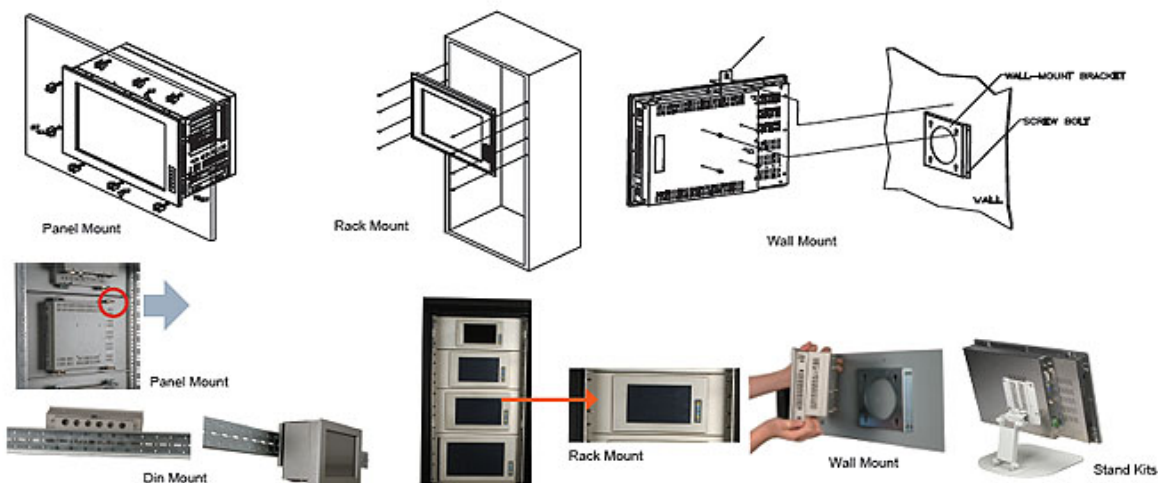
IEI OSD software is based on the VESA protocol standards and can be customized through a command library using customer defined MSSC commands. This programming feature supports easier software development.

IEI smartOSD Command List

Codes	VCP Code Names	Codes	VCP Code Names
10h	Brightness	0eh	Clock
12h	Contrast	3eh	Phase
14h	Select color temperature	8ch	Sharpness
16h	Red Video Gain	60h	Main Source
18h	Green Video Gain	62h	Volume
⋮	⋮	⋮	⋮

▲ TOP

▶ IEI Quick Mounting Technology



▲ TOP

Specifications

Model name	DM-121GXS-R11	ISDM-121GX-R11	LCD-KIT121GX-R11
LCD Size		12.1"	
Input Interface		Analog VGA + DVI-D	
Max Resolution		1024 x 768	
Brightness (cd/m ²)		450	
Contrast Ratio		700:1	
Display Color		262K	
Pixel Pitch (mm)		0.240	
Front Frame		Aluminum	N/A
Chassis		Heavy-duty steel	
View Angle (H/V)		160o/160o	
Input Voltage		12VDC or 9-36VDC	
OSD function		Yes	
Smart OSD		Yes	
Mounting	Wall/Panel/Rack/Arm (100x100)/Stand		Panel Mounting
Dimensions (W x H x D mm)	340 x 260 x 58	340 x 260 x 58	294 x 240.7x 42
Operating Temperature		0~50°C	
Front Panel Protection		IP65	N/A

▲ TOP

Ordering informations

Model	Description
Industrial Monitor – DM Series	
DM-121GXS-R11/T-R	12.1" 450cd/m ² XGA LCD Monitor, Aluminum Front Panel, Silver Color, W / Touch Screen, RoHS
DM-121GXMS-R11/T-R	12.1" 450cd/m ² XGA LCD Monitor, Aluminum Front Panel, Silver Color, W / Touch Screen, 9~36V DC input, RoHS
DM-121GXS-USB-R11/T-R	12.1" 450cd/m ² XGA LCD Monitor, Aluminum Front Panel, Silver Color, W/12.1" USB Touch Screen, RoHS

DM-121GXMS-USB-R11/T-R 12.1" 450cd/m² XGA LCD Monitor, Aluminum Front Panel, Silver Color,W/12.1" USB Touch Screen,9~36V DC input, RoHS

Industrial Stainless Steel Display Monitor-ISDM Series

ISDM-121GX-R11/T-R 12.1" 450cd/m² XGA LCD Monitor, Stainless Steel Front Panel,W/12.1" Touch Screen, RoHS

ISDM-121GXM-R11/T-R 12.1" 450cd/m² XGA LCD Monitor, Stainless Steel Front Panel,W/12.1" Touch Screen,9~36V DC input, RoHS

ISDM-121GX-USB-R11/T-R 12.1" 450cd/m² XGA LCD Monitor, Stainless Steel Front Panel,W/12.1" USB Touch Screen, RoHS

ISDM-121GXM-USB-R11/T-R 12.1" 450cd/m² XGA LCD Monitor, Stainless Steel Front Panel,W/12.1" USB Touch Screen,9~36V DC input, RoHS

Open Frame Monitor-LCD-KIT Series

LCD-KIT121GX-R11 12.1" 450cd/m² XGA TFT LCD kit, VGA and DVI-D input, RoHS

LCD-KIT121GXM-R11 12.1" 450cd/m² XGA TFT LCD kit, VGA and DVI-D input, 9~36 V DC input, RoHS

[▲TOP](#)

Options

Mounting kits **DM-121GXS/ISDM-121GXI**

Panel Mount Kits	PK-170M
Wall Mount kits	WK-190MS-R10
Rack Mount kits	RK-121MS-R10
LCD Monitor Arm	ARM-11
LCD Monitor Stand	Stand-100-RS / Stand-150-RS

[▲TOP](#)

Taiwan
IEI Technology Corp.

TEL : 886-2-8691-6798
FAX : 886-2-6616-0028
Email: <mailto:marketing@iei.com.tw>
<http://www.ieiworld.com/>

America
IEI Technology USA Corp.

TEL : +1-909-595-2819
FAX : +1-909-595-2816
Email:
<mailto:emarketing@usa.ieiworld.com>
<http://www.usa.ieiworld.com/>

China SH
IEI Technology SH Corp.

TEL : 86-21-3462-7799
FAX : 86-21-3462-7798
E-mail: sales@ieiworld.com.cn
<http://www.usa.ieiworld.com/>

Copyright© 2008; IEI Technology Corp. All rights reserved.
Design and specifications are subject to change without prior notice.

Member of ICP Group 

I don't want to receive this news again