



Digital Signage Total Solution

- Banking
- Retail/ Restaurant
- Automation
- Transportation
- Hospitality
- Education/ Museum
- Medical/ Hospital



Video Wall Solution

iSignager 500A Series

iSignager LCD Series





IEI's Digital Signage Total Solution

Digital Signage System Overview

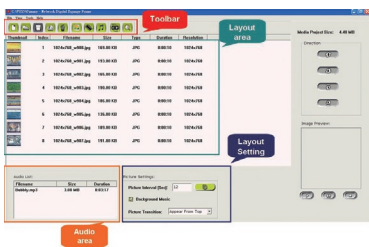
→ Data Flow
→ Action Commands Flow



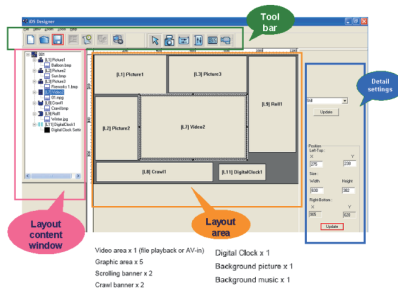
Software (for Content and Player Management)



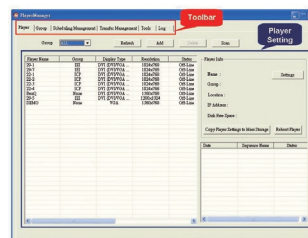
► iSignager AdExpress (Content Building Software)



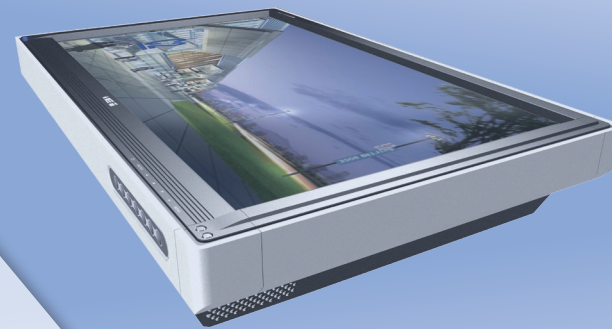
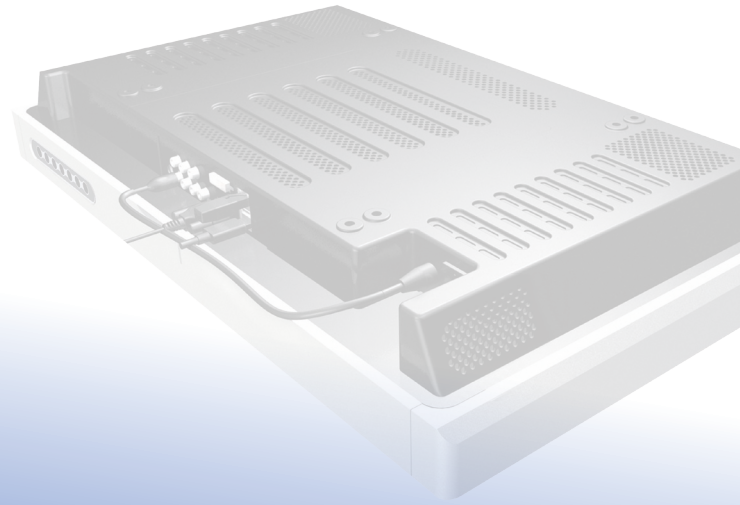
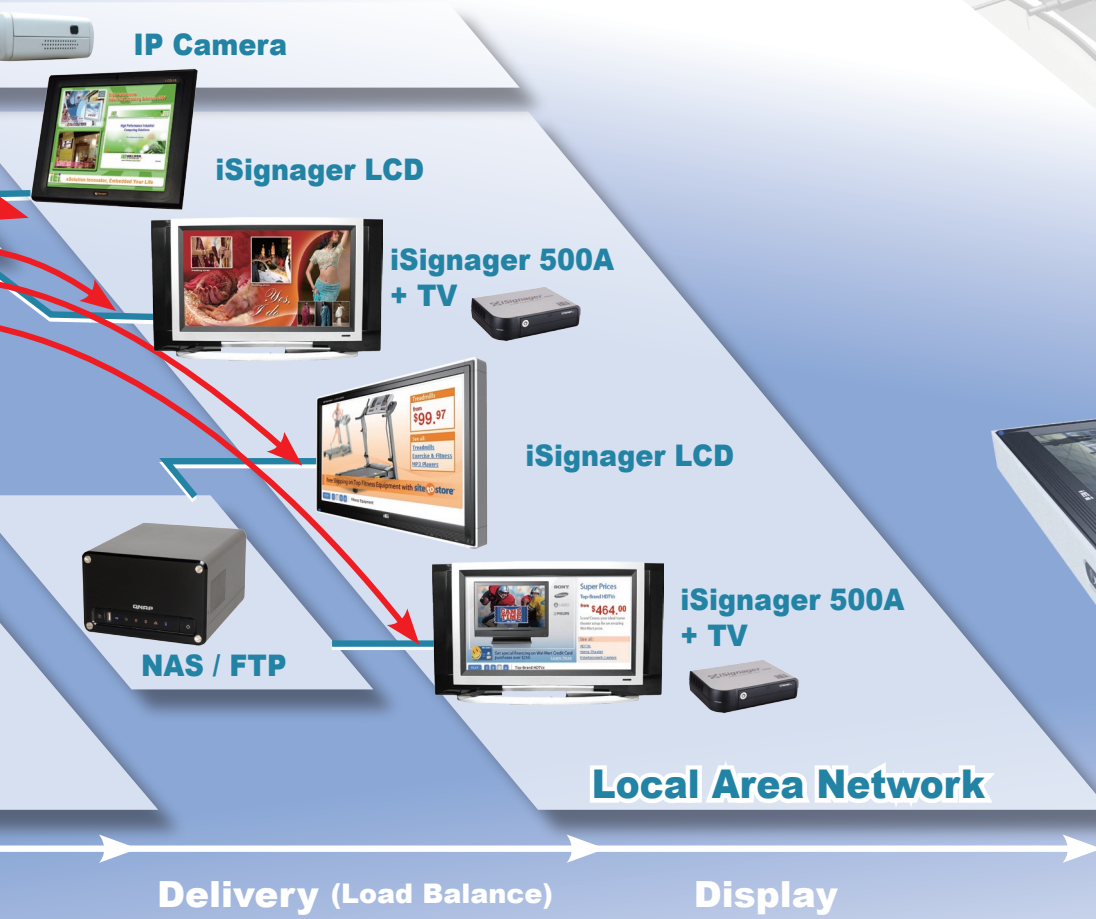
► iSignager AdDesign (Content Creation Software)



► iSignager AdMinistrator (Management Software)



A multimedia device from IEI allows you to design and show personalized contents to your target audience anytime, anywhere.



Hardware
(for Broadcast Content)



iSignager 500A



iSignager-LCD-10/12



iSignager-LCD-15/17/19



iSignager-LCD-26/42



iSignager 500A Standalone Player

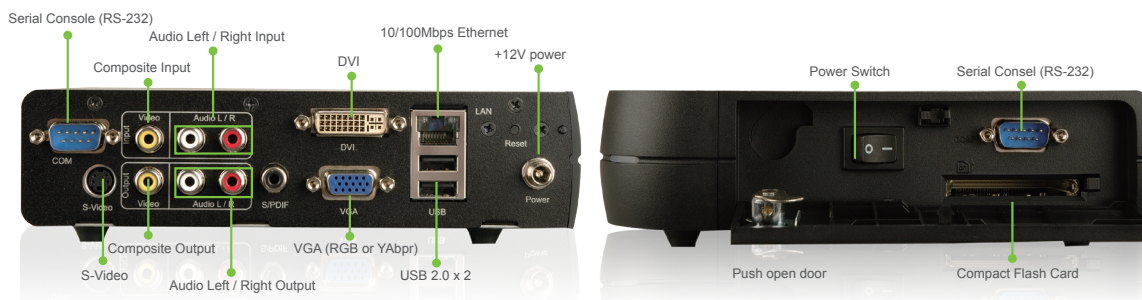
iSignager 500A is a RISC base digital signage box solution. Simply connect iSignager-500A with external display device such as LCD TV, plasma, CRT TV & projector, your personalized advertisements or information can be displayed to the audiences any time any place.

Features:

- ▶ RISC-based architecture provides high stability and low power consumption.
- ▶ Fanless design with low noise.
- ▶ Content stored in CompactFlash disk or 2.5" IDE HDD
- ▶ Ability to connect display on full resolutions via outputs S-video, DVI, VGA and Composite
- ▶ Support Full HD (1080i/p) contents up to 1920 x 1200
- ▶ Support live video input
- ▶ Network management and remote update contents via LAN or Wireless LAN
- ▶ Free bundle software iSignager AdExpress and iSignager AdDesign

Complete Output Configurations & Resolutions

iSignager 500A perfectly matches all kinds of displays via DVI, S-Video, VGA, Composite outputs.



Live Video-In Support

The iSignager-500A supports live video display with the input from TV program, surveillance camera or DVR. The rich broadcasting content can grab more attentions from the audience.





iSignager 500A

Wide Range Output Resolutions

► iSignager 500A supports full range of resolutions.

Output Port	Output Mode	Resolution
DVI	DVI	640x480, 800x600, 1024x768, 1152x864, 1280x768, 1280x960, 1280x1024, 1360x768, 1400x1050, 1600x1200, 1920x1200
	HDMI	480p(720x480), 720p(1280x720), 1080i(920x1080), 1080p(1920x1080)
VGA	VGA	640x480, 800x600, 1024x768, 1152x864, 1280x768, 1280x960, 1280x1024, 1360x768, 1400x1050, 1600x1200, 1920x1200
	YPbPr	480p(720x480), 720p(1280x720), 1080i(920x1080), 1080p(1920x1080)
S-Video	TV	640x480 (NTSC_M), 720x480 (PAL_M)
Composite RCA	TV	640x480 (NTSC_M), 720x480 (PAL_M)
Onboard LVDS	TV	640x480, 800x600, 1024x768, 1152x864, 1280x768, 1280x960, 1280x1024, 1360x768, 1400x1050, 1600x1200, 1920x1200

Support Network and Web Interface Management

iSignager 500A is equipped with RJ-45 LAN connector and wireless LAN that allow users to update content remotely.

Web interface is provided for users to update player setting, reboot the player and check the player information such as player name, display device/ resolution, network setting, etc.

Even the player is uneasy to reach, it is easy to change and update the setting and contents via web interface.



LAN or Wireless LAN





iSignager-LCD Series All-in-one Display

iSignager-LCD series is the all-in-one display that integrates digital signage player function into LCD display. IEI's product offerings ranges from 10", 12", 15", 17", 19", 26" to 42" LCD display.

Features:

- ▶ RISC-based All-in-one digital signage display
- ▶ Fanless design with low noise.
- ▶ Content stored in CompactFlash disk or 2.5" IDE HDD
- ▶ Network management and remote update content via LAN or Wireless LAN
- ▶ Free bundle software iSignager AdExpress and iSignager AdDesign
- ▶ IP 64 waterproof and dustproof Front Panel
- ▶ The same content extend to the second display with auto-scaling up to 1920 x 1200 (for iSignager-LCD Series only)

iSignager-LCD Series Product Line:

Model	iSignager-LCD	iSignager-LCD-S
LCD Size	10"/ 12"/ 15"/ 17"/ 19"/ 26"/ 42"	15"/ 17"/ 19"
Network	Built-in LAN and Wireless LAN	LAN Only (iSignager-LCD-15S/17S/19S) Built-in LAN and Wireless LAN (iSignager-LCD-15SWL/17SWL/19SWL)
The same content extend to the second display	Yes	No
Software	Free bundle iSignager AdExpress & iSignager AdDesign	

The Same Content Extend to the Second Display with Auto Scaling

For iSignager LCD-10/12/15/17/19/26/42 only

- ▶ Final screen presentation on iSignager LCD is automatically scaled to a 800 x 600 (iSignager-LCD-10) resolution, 1024 x 768 (iSignager-LCD-12/15) resolution, 1280 x 1024 (iSignager-LCD-17/19) resolution, 1920 x 1200 (iSignager-LCD-26) resolution, or 1366 x 768 (iSignager-LCD-42) resolution.
- ▶ Supports up to 1920 x 1200 content resolution for a second display device
- ▶ Output to second display device by DVI & VGA
- ▶ Content Resolution Options:
640x480, 800x600, 1024x768, 1152x864, 1280x768, 1280x960, 1280x1024, 1360x768, 1366x768, 1400x1050, 1600x1200, 1920x1200

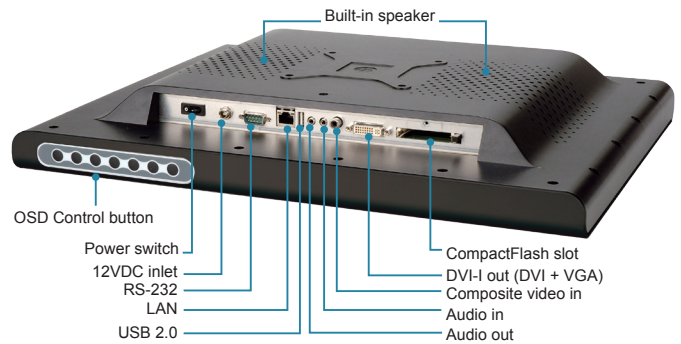


DVI

I/O Interface



iSignager-LCD Series



Mounting Accessories

► Stand Kits

STAND-A12 (for iSignager-LCD-10/12)
STAND-A19 (for iSignager-LCD-15/17/19)

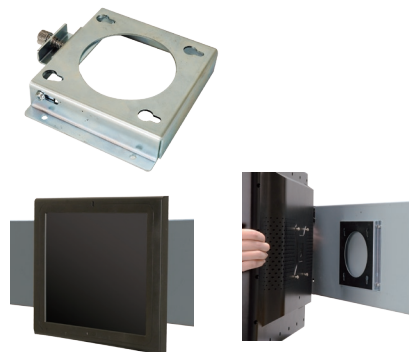


STAND-B19 (for iSignager-LCD-15/17/19)



► Wall Mount Kits

AFLWK-12 (for iSignager-LCD-10/12)
AFLWK-19 (for iSignager-LCD-15/17/19)



Model No.	iSignager LCD-10	iSignager LCD-12	iSignager LCD-15/15S	iSignager LCD-17/17S	iSignager LCD-19/19S
Stand Kits	STAND-A12		STAND-A19, STAND-B19		
Wall Mount Kits	AFLWK-12		AFLWK-15	AFLWK-17	AFLWK-19



Video Wall Solution

VWBOX-E122



IEI's VWBOX-E122 is the display wall box for four (2 x 2) LCD monitors. The VWBOX-E122 receives and displays the image on any size LCD monitor with selectable display mode. One VWBOX-E122 can support four (2 x 2) monitors with maximum resolution up to 1920 x 1200. The compact fanless design box is suitable for the installation in any kind of business implementation. Compatible with any size, any brand LCD monitor, the VWBOX-E122 is the cost-effective solution.



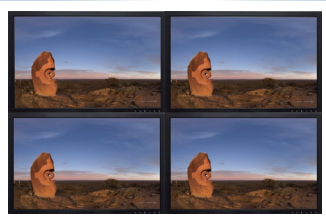
Features:

- ▶ Fanless design for any implementations.
- ▶ Provide 1 image source input (DVI/ VGA/ Component) and 4 DVI outputs to four (2 x 2) monitors.
- ▶ Support various display modes, including Full mode, clone mode, and PIP mode.
- ▶ Up to 1920 x 1200 pixel input / output per display
- ▶ OSD / Remote control functions for
 - Display mode selection
 - Output resolution selection
 - Border mask enable/ disable and frame wideness adjustment
- ▶ RS-232 communication for remote control

Support Various Display Modes

Display Modes Selection :

Clone Mode



• **Clone mode (1x1):**
The VWBOX-E122 box displays the same content on the four screens.

Full Mode



• **Full mode (2x2):**
The VWBOX-E122 box divides the input image into four sections and stretch the 1/4 image to fit to the selected resolution each monitor. The full display also support mask enable and disable.

Vertical Replication Mode



• **Vertical Replication mode (1x2):**
The IEI VWBOX-E122 can project the same image on the top two LCD panels and bottom two LCD panels. Customers can require only two LCD panels to create a larger display.

PIP Mode



Mode 1

Mode 2

Mode 3

Mode 4

• **PIP mode (Mode 1~4):**
The VWBOX-E122 box allows the 3/4 image displayed on three screen and full image displayed on the fourth screen. The VWBOX-E122 provides four display modes.

Selection	Description
Mode 1	Full image display on the left-upper screen
Mode 2	Full image display on the right-upper screen
Mode 3	Full image display on the left-lower screen
Mode 4	Full image display on the right-lower screen





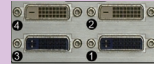
Video Wall Solution System Architecture

Input Source



VWBOX-E122



1 x Component Input	
1 x DVI-I Input	
4 x DVI Outputs	

Output Display



Video Wall Solution

VWBOX-E122



VWBOX-E122

Support Any Size LCD Monitor

The VWBOX-E122 is an cost-effective video wall box solution. It's compatible with LCD monitor in any size and any brand. The maximum resolution supported is up to 1920 x 1200 per LCD monitor.



	Source	Resolution
Input	DVI/ VGA/ Component	720x350, 640x400, 720x400, 640x480, 800x 600, 832x624, 1024x768, 1152x864, 1152x 870, 1152x900, 1280x768, 1280x960, 1280x 1024, 1600x1200, 1680x1050, 1920x1200, NTSC/PAL/SECAM 480 I/P, 720 I/P, 1080 I/P
Output	DVI	1024x768, 1360x768, 1280x1024, 1400x 1050, 1680x1050, 1600x1200, 1920x1200

Support Mask Function

The VWBOX-E122 supports mask enabled and disabled functions control. When enable the mask function, the image is overlaid for each grid space. Users can easily adjust the image to fit in the monitor with mask enabled or disabled via a remote control.



Mask Disabled

Mask Enabled

Remote Control/ OSD Function

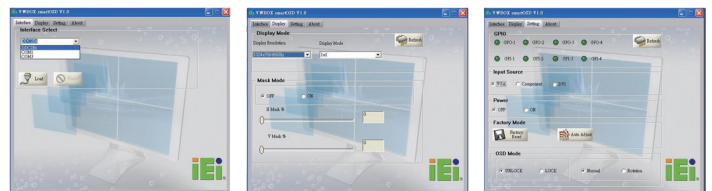
The VWBOX-E122 is packed with a remote control for easy setting. The support functions are

- Output resolution selection
- Display mode selection
- Bezel mask adjustment
- Input source selection
- Power on/off
- DIO control

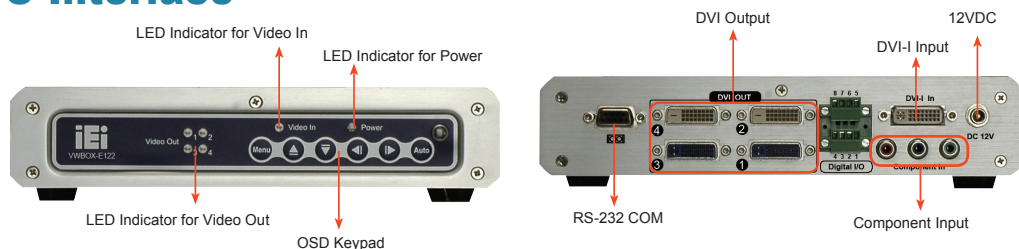


smartOSD for Remote Management / Digital IO Setting

IEI introduces the smartOSD software for remote manage and control VWBOX-E122 via RS-232 or DDC interface. The smartOSD supports all the remote control function, and it also allow the GPIO high/ low voltage setting.



I/O Interface





Content and Player Management Software

IEI provides entry level to the advanced software packages for customers. According to different inquiries and the management scale involved, customers can always have the most suitable software to fulfill the applications.



Model		iSignager AdExpress	iSignager AdDesign	iSignager AdAdministrator
		Entry	Advanced	Professional
Suggested No. of players		50	50	200 and above
Layout Design		Single-zone display	Multi-zones display	Multi-zones display
Functions	Drag and drop Layout Design	No	Yes	
	Media Zones Display	Single Zone	Multiple Zones	
	Background Picture/ Music	Music Only	Both	
	Live Video Input	No	Yes	Yes
	Auto Time Sync	With PC	With PC	With PC/ NTP Server
	Network Content Update	FTP/ NFS	TCP/IP	FTP & TCP/IP
	Client IP Mode	Static/ DHCP	Static/ DHCP	Static/ DHCP
	Player Management	Single	Multiple	Group
	Sequences Type and Schedule Management	Files looping on 24-hour base	24 hour base	Week & Month, up to Yearly base
	Scheduled Sequences Transferring	No	No	Yes
	Real Time Message	No	No	Yes
	Player Security Login & Setting	Yes	Yes	Yes
Log Report	No	No	Yes	



iSignager AdExpress Content Building Software

Free Bundle

The iSignager AdExpress is the quick and easy content building software. It is suitable for customers who want to save the time for content design.



Features:

- ▶ Express content building software
- ▶ Full screen pictures and video display
- ▶ Various transition effects
- ▶ Support background music
- ▶ Player security login and setting
- ▶ Web-base management interface
- ▶ Free bundle with iSignager-500A series and iSignager-LCD series

Full Output Resolutions & Display Mode:

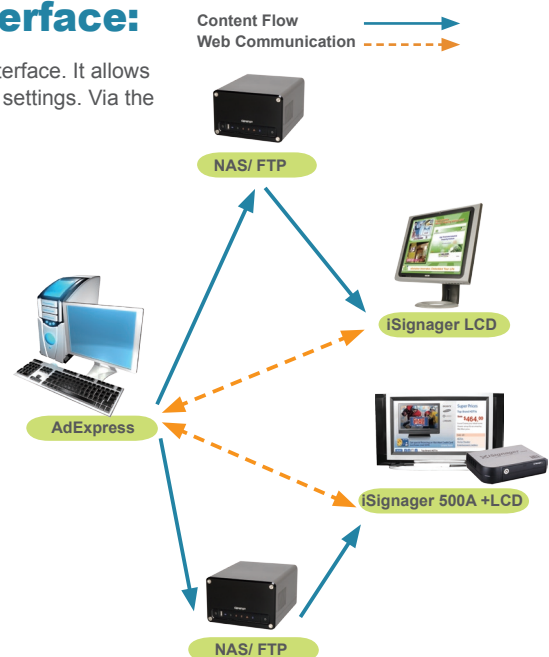
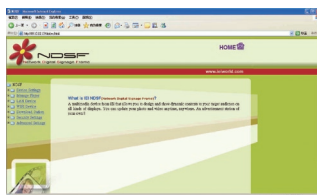
Output Port	Output Mode	Resolution
DVI	DVI	1024x 768, 1152x 864, 1280x 768, 1280x 960, 1280x 1024, 1360x 768, 1366x 768, 1400x 1050, 1600x 1200, 1920x 1200
	HDMI	480p (720x 480), 720p (1280x 720), 1080i (1920x 1080), 1080p (1920x 1080)
VGA	VGA	1024 x 768, 1152 x 864, 1280x 768, 1280x 960, 1280x 1024, 1360x 768, 1366x 768, 1400x 1050, 1600x 1200, 1920x 1200

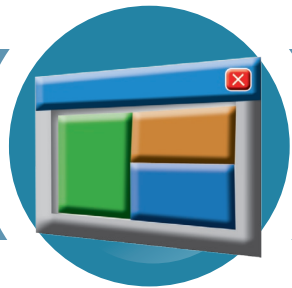
Web-base Management Interface:

iSignager AdExpress supports web-base management interface. It allows user remote access to a particular player and change the settings. Via the web interface, AdExpress supports the functions:

- ▶ Device Setting (includes display setting, NAS setting, etc)
- ▶ Manage Player (includes player rebooting, file browser management)
- ▶ Player LAN Setting
- ▶ Player WiFi Setting
- ▶ Player Security Setting
- ▶ Player Time Setting
- ▶ NTP Server Setting
- ▶ DDNS Setting
- ▶ Content Updating (Pull Mode)

AdExpress supports content files stored on the FTP. The player regularly connect to the FTP to download the updated contents everyday.





iSignager AdDesign Content Creation Software

Free Bundle

The iSignager AdDesign is the advanced content design software. Different from the AdExpress, users can personalize the display layout with iSignager AdDesign without any limitations.



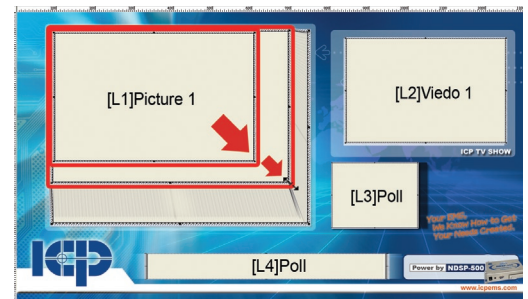
Features:

- ▶ Multiple media zones display
- ▶ Intuitive drag and drop layout design
- ▶ Support background picture and music
- ▶ Multiple players management
- ▶ 24-hour single-sequence scheduled play
- ▶ Player Security Login & Setting
- ▶ Free bundle with iSignager-500A series and iSignager-LCD series



Intuitive Drag and Drop Layout Design

The iSignager AdDesign layout interface allows users to arrange multiple media zones in a few seconds simply by drag-and-drop.



Multiple Media Zones Display

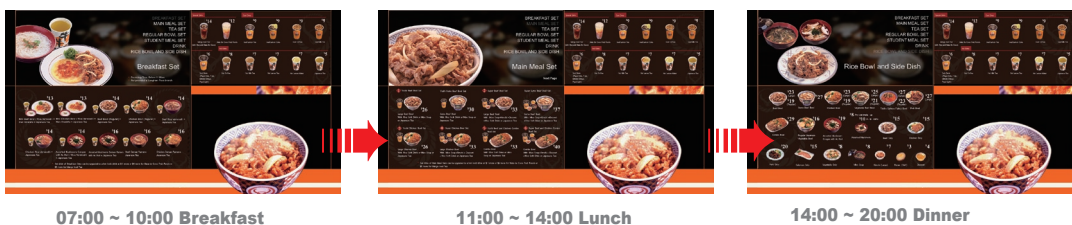
iSignager AdDesign supports multiple media zones display simultaneously on one layout, including pictures, video and banners.



	Type	Max. Zones	Presentation Mode	Content Format
Multi media zones	Picture	5	Still, Push Left, Push Right, Push Top, Push Down	32-bit color with BMP, GIF, PNG, JPEG
	Banner	4	Roll x 2 Crawl x 2	Variable scrolling and crawling speed, any position Transparent banner background color (PNG, BMP)
	Video	1	N/A	Video: MPEG-1, MPEG-2 MP@HL, MPEG-4 ASP@L5
	Digital Clock	1	Seconds, am/pm, 12/24 hour clock	Choice of size, color
Audio	Dolby® Digital, MPEG-1 and MPEG-2 Layers I, II and III (MP3) standard, MPEG-2 and MPEG-4 AAC-LC, WMA			

24-hour Scheduling Arrangement

The flexible scheduling system by iSignager AdDesign empowers diversified and versatile promotion campaigns. The specific information can be presented to target audience in specific time slots to enhance the promotion.



07:00 ~ 10:00 Breakfast

11:00 ~ 14:00 Lunch

14:00 ~ 20:00 Dinner

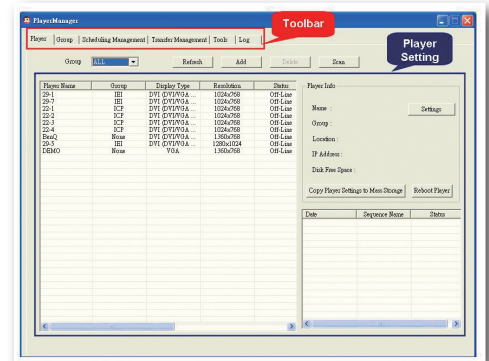


iSignager AdAdministrator Management Software

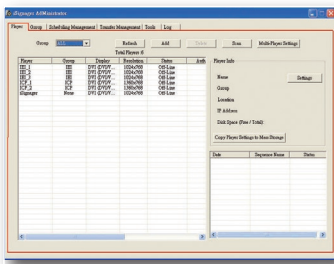
iSignager AdAdministrator is the most advanced content creation and player management software suitable for large quantity player installation. It consists all great features of iSignager AdDesign and adds other advanced functions. With the powerful functions, iSignager AdAdministrator is convenient to schedule display contents and manage multiple digital signage players in one application.

Features:

- ▶ Multiple media zones display
- ▶ Multi-Clients & Group Management
- ▶ Scheduled sequences transferring
- ▶ Yearly Multi-Sequence scheduled play
- ▶ Real Time Message
- ▶ Player Security Login & Setting
- ▶ Log management supports output CVS file format for easy custom-made report
- ▶ Auto Time Sync with PC/ NTP Server

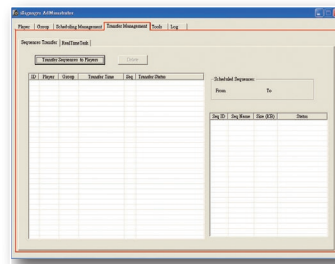


Screenshot on iSignager AdAdministrator

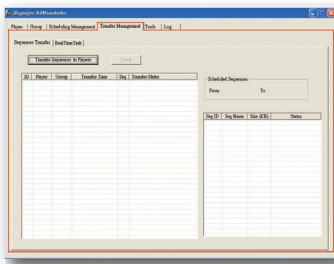


Player management lists out all the players and allows user to easily understand the status of each player. The functions includes

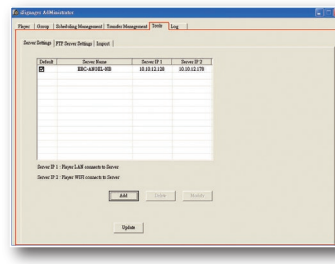
- ▶ Add players
- ▶ Monitor player status
- ▶ Setup player setting
- ▶ Setup player network configurations



Transfer management allows users to transfer the whole sequence or update the real time message to the single media zone. The support format includes RSS, text and picture.

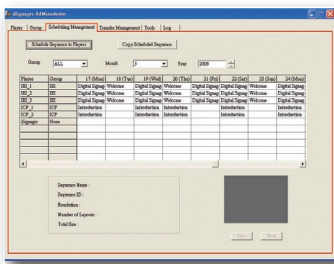


Group management allows users to classify the players into groups. It helps users easily control, manage and update contents to multi-players in a particular group.

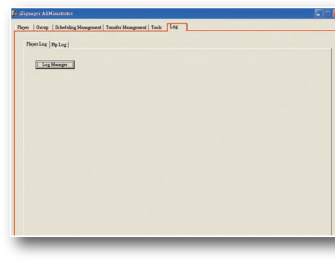


Tools is designed for server setting, including

- ▶ Server setting
- ▶ FTP Server setting
- ▶ Database Import



Scheduling Management allows users to pre-arrange the display schedule for each player on daily, weekly, monthly and up to yearly base.

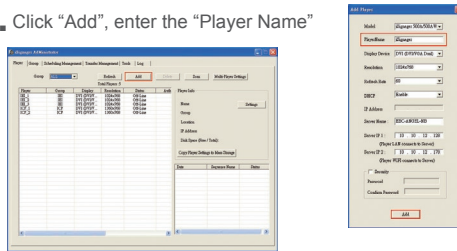


Log function records the details information for each file displayed in a certain period. The organized data helps advertising performance analysis and calculation.

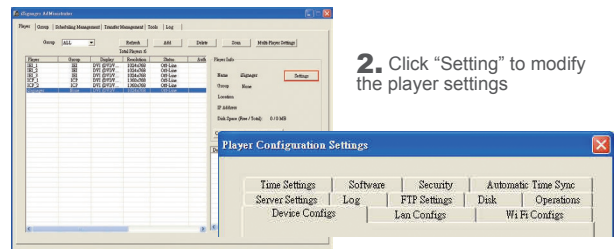
Manage the Large Scale Digital Signage Network

Step 1. Add a player

1. Click "Add", enter the "Player Name"

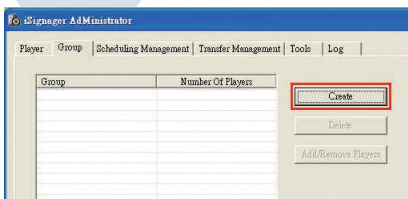


2. Click "Setting" to modify the player settings

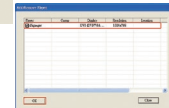
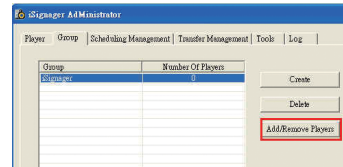


Step 2. Assign a player into a group

1. Click "Create" to add a new group and enter the group name

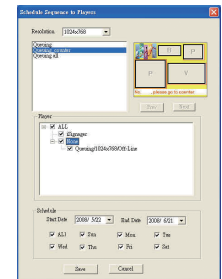
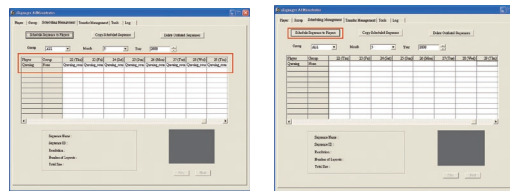


2. Choose a group where you would assign a player to and click "Add/Remove Players" to start.



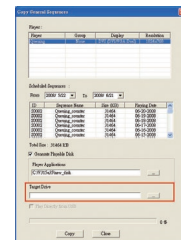
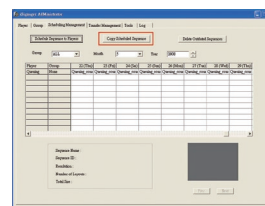
Step 3. Schedule the sequence to players

1. Click the "Schedule sequence to players".
2. Choose the sequence, the target players and the desired display schedule.
3. Click "save" to store the schedule.



Step 4. Generate a playable disk

1. Click the "Copy Scheduled Sequence".
2. Choose the players, the display duration and the storage device. Then "Save".



Step 5. Insert the CF card to player and start display

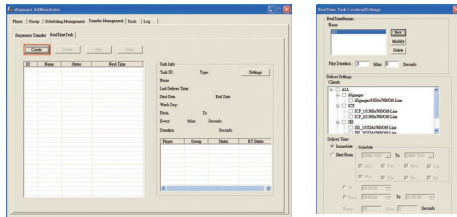




Manage the Large Scale Digital Signage Network

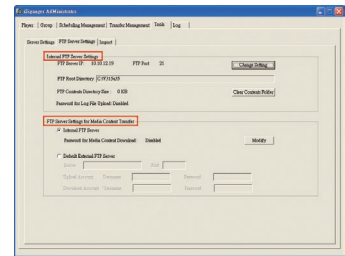
Value-Added Functions

1. Real-time task transferring



2. Support FTP

- Support internal FTP server
- Support FTP server setting for media content transfer

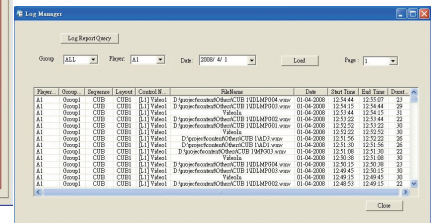
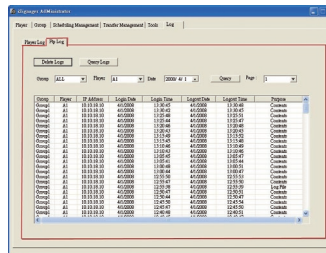


3. Log Report

Log management supports output CVS file format for easy custom-made report

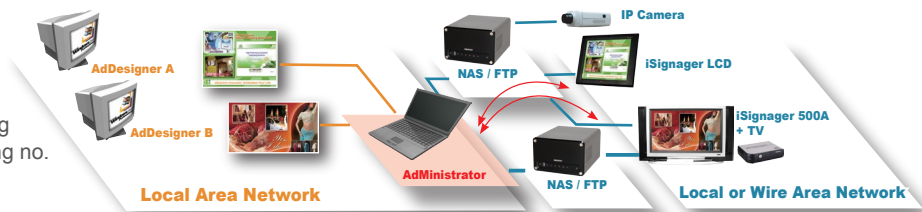
FTP Log records the communication between the player and the FTP side, including content loading, Log data updates, etc.

Player Log shows the detail information about a particular displaying file, for example a video. The information includes the display date, the start time, the end time and the playing duration.



Support FTP Function Enables Cost-Effective Load Balance

iSignager AdMinistrator supports FTP function and makes cost-effective load balance for the large scale digital signage network by using NAS/ FTP server instead of increasing no. of management server.



► Storage Server

Data Center

- File Server
- FTP Server
- Sharing files across Windows and Mac



Backup Solution

- Backup Server
- RAID-1 Mirroring
- Remote Replication



IP Camera

- Support video recording
- Monitor audience feedbacks
- Monitor player status



► Recommended QNAP NAS



Model	TS-109	TS-209	TS-409
HDD	1-Bay for 3.5" SATA I/II HDD	2-Bay for 3.5" SATA I/II HDD	4-Bay for 3.5" SATA I/II HDD
RAID	1 (Mirroring)	1 (Mirroring)	0,1,5,6
Replication	Yes	Yes	Yes
Web Console	Yes	Yes	Yes



Specifications

iSignager 500A Series



Model		iSignager-500A-R10	iSignager-500AWL-R10
Video Input	Composite	RCA x 1	
Video Output	DVI	VESA DVI-I connector x 1, up to 1920 x 1080 p @ 60Hz with the H/W scaler	
	Analog VGA	D-sub 1-pin, up to 1920 x 1200	
	S-Video	Mini-DIN 4 pin connector x 1	
	Composite	RCA x 1	
Audio Input		Unbalanced stereo RCA jack x 2	
Audio Output		Unbalanced stereo RCA jack x 2	
LAN		RJ-45 x 1	
Wireless		N/A	802.11b/g wireless
USB		USB A-type Connector x 2	
HDD Drive Bay		2.5" IDE HDD bay	
SSD Drive Bay		1 x CF Type II slot	
Construction Material		ABS+ PC Plastic (front panel) Heavy duty steel	
Dimensions		187.2 x 133.7 x 46 mm	
Power Input		12VDC power adapter, 90VAC~240VAC input @5~60Hz, 45W	
Power Consumption		8W	
Operation Temperature		0°C~50°C	
Net Weight		1.2 KGS	
EMC/Safety		CE, FCC, UL	

VWBOX-E122 Video Wall Box



Model Name		VWBOX-E122
Front Panel	LED Indicator	1x Video Input 4x Video Output 1x Power
	Keypad Control	Menu, Up, Down, Left, Right, Auto
I/O Interface	Video Input	1 x DVI-I, 1 x Component
	Video Output	4 x DVI Output
	Power	1 x Power Switch
	Serial Port	1 x RS-232
Resolution	Input	720x350, 640x400, 720x400, 640x480, 800x 600, 832x624, 1024x768, 1152x864, 1152x 870, 1152x900, 1280x768, 1280x960, 1280x 1024, 1600x1200, 1680x1050, 1920x1200
	Output	1024x768, 1360x768, 1280x1024, 1400x 1050, 1680x1050, 1600x1200, 1920x1200
Power	Power Input	12V DC in
	Power Adapter	90VAC to 264VAC / 47Hz to 63Hz
	Power Consumption	25W
OSD/ Remote Control		1. Display mode selection 2. Output resolution selection 3. Border mask enable/ disable
Operating Temperature		0~40°C
Dimension		178.2 x 229.5 x 47 mm
Safety		UL, CE, FCC



Specifications

iSignager LCD Series



Model		iSignager-LCD-10	iSignager-LCD-12	iSignager-LCD-15	iSignager-LCD-15S	iSignager-LCD-17	iSignager-LCD-17S	iSignager-LCD-19	iSignager-LCD-19S	iSignager-LCD-26	iSignager-LCD-42		
LCD	LCD Size	10.4"	12.1"	15"		17"		19"		25.54"	42.02"		
	Max Resolution	800 x 600	1024 x 768	1024 x 768		1280 x 1024				1920 x 1200	1366 x 768		
	Brightness (cd/m ²)	400	450	350		300				350	500		
	Contrast Ratio	500:1	700:1	400:1		800:1				1500:1			
	LCD Color	16.2M	262K	262K		16.7M				16.7M			
	Pixel Pitch (mm)	0.264 (H) x 0.264 (V)	0.240 (H) x 0.240 (V)	0.297 (H) x 0.297 (V)		0.264 (H) x 0.264 (V)		0.294 (H) x 0.294 (V)		0.2865 (H) x 0.2865 (V)	930.25 (H) x 523.01 (V)		
	Viewing Angle (H-V)	120 / 100	160 / 160	120 / 100		160 / 160				176 / 176	178 / 178		
	Backlight MTBF	50000											
	OSD function	N/A		7 KEYS	5 KEYS	7 KEYS	5 KEYS	7 KEYS	5 KEYS	7 KEYS			
	Auto Dimming	N/A		Ambient Light Sensor	N/A	Ambient Light Sensor	N/A	Ambient Light Sensor	N/A	Ambient Light Sensor			
	Second Display	1 x DVI-I (DVI+VGA)		1 x DVI-I (DVI+VGA)	N/A	1 x DVI-I (DVI+VGA)	N/A	1 x DVI-I (DVI+VGA)	N/A	1 x DVI-I (DVI+VGA)			
I/O Interface	Video In/ Audio In	1 x RCA for composite video in 1 x 3.5mm phone jack for audio in											
	USB	1 x USB 2.0											
	Ethernet	1 x 10/100mBase-T											
	Wireless	802.11 b/g wireless		802.11 b/g wireless (for iSignager-LCD-15 & iSignager-LCD-15SWL only)		802.11 b/g wireless (for iSignager-LCD-17 & iSignager-LCD-17SWL only)		802.11 b/g wireless (for iSignager-LCD-19 & iSignager-LCD-19SWL only)		802.11 b/g wireless			
	Serial Port	1 x RS-232											
	Audio out	built-in 1.5W+ 1.5W AMP speaker 1 x 3.5mm audio phone jack				built-in 2W+ 2W AMP speaker 1 x 3.5mm audio phone jack		built-in 3W+ 3W AMP speaker 1 x 3.5mm audio phone jack		built-in 6W+ 6W AMP speaker 1 x 3.5mm audio phone jack		built-in 10W+10W AMP speaker 1 x 3.5mm audio phone jack	
	Remote Control	Panel on/off Volume Control Brightness/ Contrast OSD											
Storage	HDD Drive Bay	2.5" IDE HDD bay											
	SSD Drive Bay	1 x CF Type II slot											
Power	Input Voltage	12VDC in								90V-264V AC in			
	Power adapter	60W ACDC Power Adapter 90VAC~240VAC @50~60Hz input											
	Consumption	27W	27W	27W	41W		42W		128W	213W			
LED Function	1 x Power ON/OFF LED on the front panel												
Operation Temperature	0°C~50°C									0°C~45°C			
Dimension (WxLxD)	276 x 227 x 51 mm	304 x 246 x 50 mm	393 x 308 x 61 mm		428 x 350 x 65 mm		470 x 383 x 67 mm		622 x 425 x 100 mm	1017 x 582 x 135 mm			
Net Weight	1.33 KG	2.12 KG	3.2 KG		3.8 KG		4.4 KG		16.7 kg	42.0 KG			
Front Panel Protection	IP64												
EMC / Safety	CE, FCC, UL												



Ordering Information

	Model No.	Descriptions	Free bundle Software	
iSignager 500A Player	iSignager-500A-R10	Network digital signage player, 10/100M LAN, 2x USB, VGA/S-video/DVI/component output, Silver, RoHS	iSignager AdExpress iSignager AdDesign	
	iSignager-500AWL-R10	Network digital signage player, 802.11b/g wireless, 10/100M LAN, 2x USB, VGA/S-video/DVI/component output, Silver, RoHS	iSignager AdExpress iSignager AdDesign	
iSignager LCD	10.4"	iSignager-LCD-10-R10	10.4" TFT LCD all-in-one Network Digital Signage Display, Dual Display supported, 400cd/m ² brightness, built-in 802.11b/g wireless, 10/100M LAN, 2 x 1.5W speaker, with OSD remote control, 1GB CF card, 60W power adaptor, black, RoHS	iSignager AdExpress iSignager AdDesign
	12.1"	iSignager-LCD-12-R10	12.1" TFT LCD all-in-one Network Digital Signage Display, Dual Display supported, 450cd/m ² brightness, built-in 802.11b/g wireless, 10/100M LAN, 2 x 1.5W speaker, with OSD remote control, 1GB CF card, 60W power adaptor, black, RoHS	iSignager AdExpress iSignager AdDesign
	15"	iSignager-LCD-15-R10	15" TFT LCD all-in-one Network Digital Signage Display, Dual Display supported, 350cd/m ² brightness, built-in 802.11b/g wireless, 10/100M LAN, 2 x 1.5W speaker, with OSD remote control, 1GB CF card, 60W power adaptor, black, RoHS	iSignager AdExpress iSignager AdDesign
		iSignager-LCD-15S-R10	15" TFT LCD all-in-one Network Digital Signage Display, Single Display, 350cd/m ² brightness, built-in 10/100M LAN, 2 x 1.5W speaker, with OSD remote control, 1GB CF card, 60W power adaptor, black, RoHS	iSignager AdExpress iSignager AdDesign
		iSignager-LCD-15SWL-R10	15" TFT LCD all-in-one Network Digital Signage Display, Single Display, 350cd/m ² brightness, built-in 802.11b/g wireless, 10/100M LAN, 2 x 1.5W speaker, with OSD remote control, 1GB CF card, 60W power adaptor, black, RoHS	iSignager AdExpress iSignager AdDesign
	17"	iSignager-LCD-17-R10	17" TFT LCD all-in-one Network Digital Signage Display, Dual Display supported, 350cd/m ² brightness, built-in 802.11b/g wireless, 10/100M LAN, 2 x 2W speaker, with OSD remote control, 1GB CF card, 60W power adaptor, black, RoHS	iSignager AdExpress iSignager AdDesign
		iSignager-LCD-17S-R10	17" TFT LCD all-in-one Network Digital Signage Display, Single Display, 350cd/m ² brightness, built-in 10/100M LAN, 2 x 2W speaker, with OSD remote control, 1GB CF card, 60W power adaptor, black, RoHS	iSignager AdExpress iSignager AdDesign
		iSignager-LCD-17SWL-R10	17" TFT LCD all-in-one Network Digital Signage Display, Single Display, 350cd/m ² brightness, built-in 802.11b/g wireless, 10/100M LAN, 2 x 2W speaker, with OSD remote control, 1GB CF card, 60W power adaptor, black, RoHS	iSignager AdExpress iSignager AdDesign
	19"	iSignager-LCD-19-R10	19" TFT LCD all-in-one Network Digital Signage Display, Dual Display supported, 350cd/m ² brightness, built-in 802.11b/g wireless, 10/100M LAN, 2 x 3W speaker, with OSD remote control, 1GB CF card, 60W power adaptor, black, RoHS	iSignager AdExpress iSignager AdDesign
		iSignager-LCD-19S-R10	19" TFT LCD all-in-one Network Digital Signage Display, Single Display, 350cd/m ² brightness, built-in 10/100M LAN, 2 x 3W speaker, with OSD remote control, 1GB CF card, 60W power adaptor, black, RoHS	iSignager AdExpress iSignager AdDesign
		iSignager-LCD-19SWL-R10	19" TFT LCD all-in-one Network Digital Signage Display, Single Display, 350cd/m ² brightness, built-in 802.11b/g wireless, 10/100M LAN, 2 x 3W speaker, with OSD remote control, 1GB CF card, 60W power adaptor, black, RoHS	iSignager AdExpress iSignager AdDesign
	26"	iSignager-LCD-26-R10	26" TFT LCD all-in-one Network Digital Signage Display, Dual Display supported, 1500cd/m ² brightness, built-in 802.11b/g wireless, 10/100M LAN, 2 x 3W speaker, with OSD remote control, 1GB CF card, black, RoHS	iSignager AdExpress iSignager AdDesign
	42"	iSignager-LCD-42-R10	42.02" TFT LCD all-in-one Network Digital Signage Display, Dual Display supported, 1500cd/m ² brightness, built-in 802.11b/g wireless, 10/100M LAN, 2 x 10W speaker, with OSD remote control, 1GB CF card, black, RoHS	iSignager AdExpress iSignager AdDesign
	iSignager AdMinistrator	ISIGNAGER-ADMINISTRATOR-V3-20	iSignager AdDesignPro and AdMinistrator V 3.X, with CD & license for 20 players	N/A
ISIGNAGER-ADMINISTRATOR-V3-50		iSignager AdDesignPro and AdMinistrator V 3.X, with CD & license for 50 players	N/A	
ISIGNAGER-ADMINISTRATOR-V3-100		iSignager AdDesignPro and AdMinistrator V 3.X, with CD & license for 100 players	N/A	
ISIGNAGER-ADMINISTRATOR-V3-200		iSignager AdDesignPro and AdMinistrator V 3.X, with CD & license for 200 players	N/A	
ISIGNAGER-ADMINISTRATOR-V3-300		iSignager AdDesignPro and AdMinistrator V 3.X, with CD & license for 300 players	N/A	
ISIGNAGER-ADMINISTRATOR-V3-500		iSignager AdDesignPro and AdMinistrator V 3.X, with CD & license for 500 players	N/A	
ISIGNAGER-ADMINISTRATOR-V3-1000		iSignager AdDesignPro and AdMinistrator V 3.X, with CD & license for 1000 players	N/A	
ISIGNAGER-ADMINISTRATOR-V3-2000		iSignager AdDesignPro and AdMinistrator V 3.X, with CD & license for 2000 players	N/A	
ISIGNAGER-ADMINISTRATOR-V3-unlimited		iSignager AdDesignPro and AdMinistrator V 3.X, with CD & license for unlimited players	N/A	
QNAP NAS	TS-109	Fanless Storage Server with Marvell 5182 500MHz CPU, 128 DDRII RAM, 8MB Flash. 1 x Gigabit RJ-45 Ethernet port, silver, RoHS	N/A	
	TS-209	Storage Server with Marvell 5182 500MHz CPU, 128 DDRII RAM, 8MB Flash. 1 x Gigabit RJ-45 Ethernet port, silver, RoHS	N/A	
	TS-409	Storage Server with Marvell 5182 500MHz CPU, 256 DDRII RAM, 8MB Flash. 1 x Gigabit RJ-45 Ethernet port, silver, RoHS	N/A	
Video Wall Box	VWBOX-E122-R10	Video Wall Control Box, 1 x DVI Input, 1 x Component Input, 4 x DVI Output, 2 by 2 display	N/A	
	VWBOX-E122/DVI-R10	Video Wall Control Box, 1 x DVI Input, 4 x DVI Output, 2 by 2 display	N/A	



HongKong

IEI Technology Corp.
No. 16, Jhonggang Rd., Sungshih City/Taipei County, 221, Taiwan
TEL: +886-2-88618766 FAX: +886-2-88108888
sales@ieitech.com www.ieitech.com

America

IEI Technology USA Corp.
100 University Parkway, Fremont, CA 91705
TEL: +1-800-875-8788 FAX: +1-800-875-2818
sales@usa.ieitech.com www.usa.ieitech.com

China

IEI Technology (Shanghai) Co., Ltd.
上海伊泰信息技术有限公司 1722 号 2 楼
3F No. 1722 Yi-Tan Road, Min-Hang, Shanghai, China
TEL: +86-21-3488-7788 FAX: +86-21-3488-7788, 2428-7787
sales@shanghai.ieitech.com www.shanghai.ieitech.com