



Winmate Communication Inc.
9F, No. 111-6, Shing-De Rd., San-Chung City,
Taipei 241, Taiwan, R.O.C.
Contact us : sales@winmate.com.tw

TEL: +886-2-8511-0288, 6635-5758
FAX: +886-2-8511-1108
WEB: <http://www.winmate.com.tw>

Distributor and more products:
please refer to our website

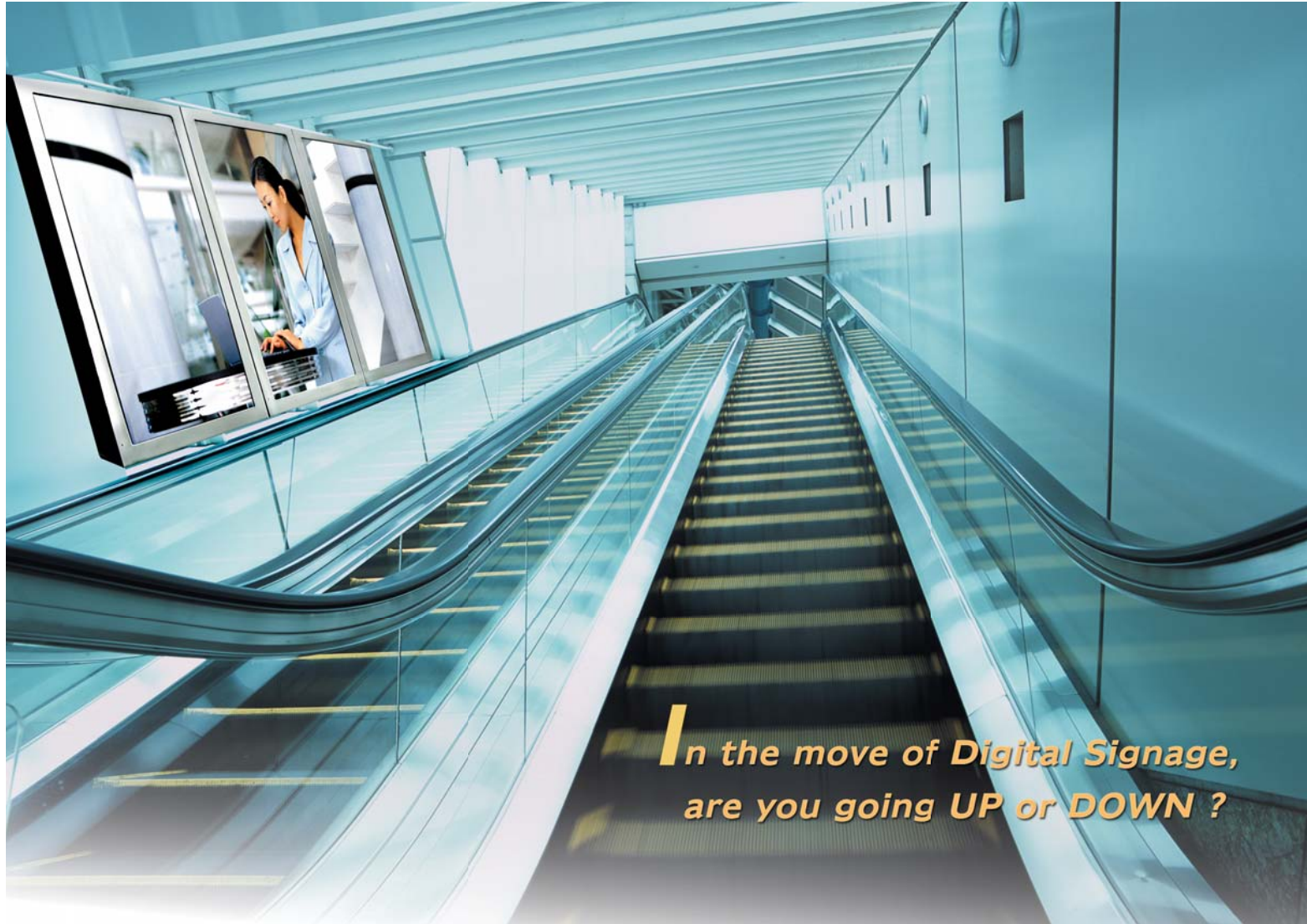


Embedded Digital Signage

Join The New Trend In The Market.

2008 PRODUCT CATALOG





**In the move of Digital Signage,
are you going UP or DOWN ?**

Embedded Digital Signage

Company Introduction

Winmate Communication Inc., the leading industrial TFT-LCD display & embedded system manufacturer in the world, providing full range of displays from 4.3" to 65" and combining versatile embedded single board computers fulfilling application requests for many industries. Winmate's good corporate brand is established in both taking product quality seriously and respecting material usage to protect environment. With ISO 9001:2000, IECQ QC 080000, ISO 14001 and RoHS compliance, Winmate becomes the best supplier in industrial applications.



Why Winmate in Digital Signage ?

Since the year 2000, Winmate used the existing know-how of display technology and started to develop Digital Signage solution. We designed the Digital Signage board and mechanical housing by ourselves. We also have a dedicated software team in charge of software development. Therefore, we are capable of customizing different functions according to customer's applications.

All Winmate Digital Signage products have passed safety and reliability tests:



Two Major Product Categories

With the **Standalone solution**, you only need to copy the media files in the memory card (CF/microDrive/SD/MS/SM/MMC), then plug it into Media Player and start to play.
 With the **Networked solution**, we will provide management software (MSO series) for edit playlist, schedule, and media files, then transfer to the Network Player through the Ethernet.



- Economic investment
- Durable playback guarantee
- Replacement for static posters
- Replacing DVD players
- No Ethernet control over players is needed

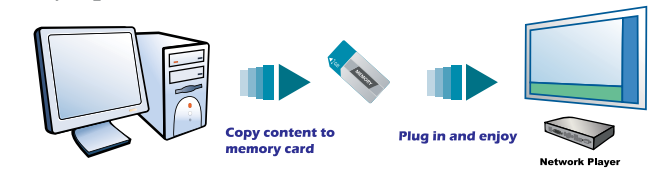
- Embedded Multimedia playing engine
- Hassle-free content update via Ethernet, no need to change memory card
- Flexible Layouts (up to 6 Zones)
- Powerful group management
- Real-time player status overview

Standalone Player Basic Features

The 6-in-1 Media Player brings entertainment and advertising within easy reach. You can easily display your digital content in this durable platform. All playback controls are made via remote control.

- ❖ Fully fanless and very low power consumption (<5W)
- ❖ Compact Design
- ❖ Support of Storage Media: CF, MicroDrive, SM, MMC, SD, MS
- ❖ Very easy to use: just copy the media files to the memory card and plug memory card into the player, no need any additional software
- ❖ Remote Control to easily adjust settings
- ❖ Add-on functions: Motion Detect, Button-Control, Sunlight Readable LCDs

Easy Operation



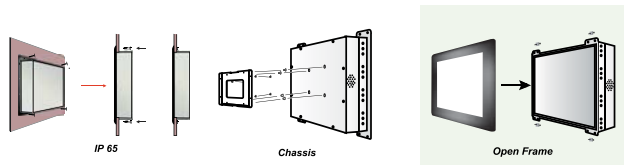
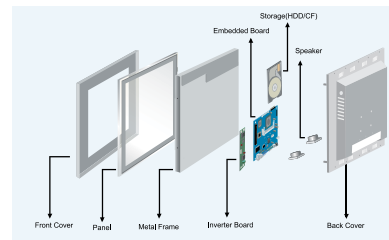
Model Number	MPC110	MPC200	MPC300	MPC500
Mechanical	BOX	BOX	BOX	BOX
Typical Power	4.8W	4.8W	4.8W	4.8W
Output: Video & Audio	S-Video/ CVBS Stereo Phone Jack	VGA/CVBS / S-Video Stereo Phone Jack	VGA/CVBS / S-Video Stereo Phone Jack	DVI /CVBS / S-Video Stereo Phone Jack
Storage Media	CF/IBM Microdrive (Standard) SM/MMC/SD/MS (Optional, by request)	CF/IBM Microdrive (Standard) SM/MMC/SD/MS (Optional, by request)	CF/IBM Microdrive (Standard) SM/MMC/SD/MS (Optional, by request)	CF/IBM Microdrive (Standard)
Supported Media Format	MPEG1,MPEG2,MPEG4,JPG,Mp3	MPEG1,MPEG2,MPEG4,JPG,Mp3	MPEG1,MPEG2,MPEG4,JPG,Mp3	MPEG1,MPEG2,MPEG4,JPG,Mp3, WMV9
USB	N/A	N/A	Yes	Yes

Customize Your Media Player

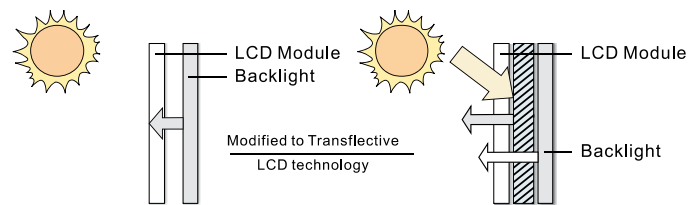
Based on the experience in Industrial Display, from mechanical design to sunlight readable; from hot key control to motion detect, Winmate is capable of customizing the media player you need.

Mechanical Design

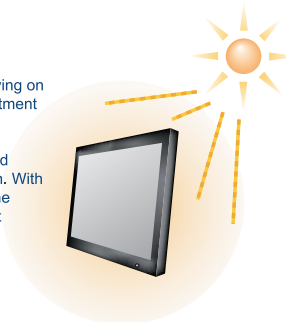
To fulfill diversified demands from various segments, there are millions of mounting types needed. Chassis, Open Frame, Panel Mount, Rack Mount, you name it! Based on the experience in Industrial Display, our various Digital Signage product lines with different designs of mounting kits can fulfill both standard or non-standard system mounting solutions. We use 3D drawing software to analyze if the product mounting is right and no interference. And then we use 2D drawing to demarcate the mounting dimension and directions. The configurations below show the mounting approaches and kits we utilize:



Sunlight Readable



In outdoor environment, you may be unable to see what is playing on a normal LCD due to the strong ambient light. Then your investment in advertising becomes useless. That's why we have sunlight readable solution for you. Transflective LCD technology can be applied to certain selected regular TFT LCD to introduce the LCD with a reflective function. With the imposed reflective function, the modified LCD can reflect the ambient light passing the LCD cell and utilize the reflected light beams as its illumination. The stronger the ambient light is, the brighter the LCD will appear. As a result, the modified LCD is viewable under sunlight.



Value-Added Features

The add-on functions greatly help you to win projects. You can customize color, playback mechanism, mechanical design, panel selection depends on the needs of your applications. Winmate does it all for you.

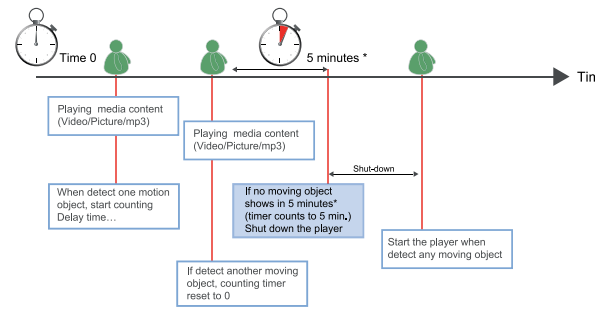
Hot Key Control

- Default Play: play the 1st file in continuous loop
- Press Button1 to play the 2nd file, after playing one time, go back to the default play loop
- Button 2 ~ 7 represents the 3rd ~ 8th file
- If user presses another button during playback, system playback will jump to the corresponding file immediately



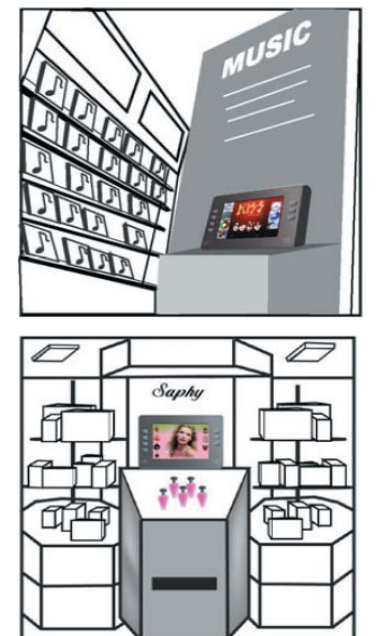
Motion Detect

- Motion Sensor to detect moving objects
- System starts to play only if moving object is detected
- Reset timer if another moving object is detected
- Timer can be set from 0-30 min



* : Timing can be adjusted by user
 ● : Moving objects

Applications



Integrated Media Player

The integrated Media Player is very slim and suitable for applications which have limited space. It also eliminates the cabling issue and makes the installation much easier.



Size (inches)	7"	8"	8"	8.4"	10.4"	10.4"	12.1"	15"
Model Number	W07XE00-CHA1MP	R08TE00-CHD1MP	R08TE00-CHD1MB	R08TE00-CHT1MP	R10LE00-CHU1MP	R10LE00-CHP1MP	R12TE00-CHL1MP	R15LE00-CHC3MP
Mechanical	Chassis	Chassis	Chassis	Chassis	Chassis	Chassis	Chassis	Chassis
Panel Pixel Format	480x234	640x480	640x480	800x600	800x600	800x600	800x600	1024x768
Brightness (cd/m ²)	400	400	400	350	400	350	300	250
Contrast Ratio (Typ.)	300:1	250:1	250:1	250:1	500:1	500:1	200:1	500:1
Viewing Angles CR>=10 (Typ.)	-65~65 (H); -65~40 (V)	-65~65 (H); -65~55 (V)	-65~65 (H); -65~55 (V)	-65~65 (H); -65~55 (V)	-60~60 (H); -65~3 (V)	-60~60 (H); -60~40 (V)	-60~60 (H); -65~40 (V)	-65~65 (H); -55~65 (V)
PWR Consumption typ. normal	20W	25W	25W	25W	30W	30W	38W	38W
Video & Audio I/O	Stereo Output 2Wx2 Speaker	Stereo Output 2Wx2 Speaker	Stereo Output 2Wx2 Speaker	Stereo Output 2Wx2 Speaker	Stereo Output 2Wx2 Speaker	Stereo Output 2Wx2 Speaker	Stereo Output 2Wx2 Speaker	Stereo Output 2Wx2 Speaker
Supported Media Format	MPEG1/2/4, JPEG, MP3	MPEG1/2/4, JPEG, MP3	MPEG1/2/4, JPEG, MP3	MPEG1/2/4, JPEG, MP3	MPEG1/2/4, JPEG, MP3	MPEG1/2/4, JPEG, MP3	MPEG1/2/4, JPEG, MP3	MPEG1/2/4, JPEG, MP3
Storage Medium	CF/SM/Miniature SMMMC/SDMS card	CF/SM/Miniature SMMMC/SDMS card	CF/SM/Miniature SMMMC/SDMS card	CF/SM/Miniature SMMMC/SDMS card	CF/SM/Miniature SMMMC/SDMS card	CF/SM/Miniature SMMMC/SDMS card	CF/SM/Miniature SMMMC/SDMS card	CF/SM/Miniature SMMMC/SDMS card
VESA Mounting	Yes	Yes	Yes	Yes	Yes	Yes	Yes	Yes
Mechanical Option	W07XE00-OFA1MP	W07XE00-OFA1MP		R08TE00-OFT1MP	R10LE00-OFP1MP	R12TE00-OFL1MP	R15LE00-OFC3MP	

15"	17"	17"	19"	19"	20.1"	26"	32"	42"
R15LE00-CHC3MP	R17LE00-CHM1MP	W17LE00-CHA1MP	R19LE00-CHM1MP	W19LE00-CHM1MP	W20LE00-CHA3MP	W26LE00-CHA2MP	W32LE00-CHA1MP	W42LE00-CHL1MP
Chassis	Chassis	Chassis	Chassis	Chassis	Chassis	Chassis	Chassis	Chassis
1024x768	1280x1024	1280x1024	1280x1024	1440x900	1366x768	1366x768	1366x768	1366x768
400	300	300	300	300	450	500	500	500
500:1	800	600:1	800:1	850:1	600:1	1500:1	1500:1	1500:1
-70~70 (H); -60~65 (V)	-80~80 (H); -80~80 (V)	-89~89 (H); -89~89 (V)	-80~80 (H); -80~80 (V)	-85~85 (H); -80~80 (V)	-80~80 (H); -60~80 (V)	-88~88 (H); -88~88 (V)	-89~89 (H); -89~89 (V)	-89~89 (H); -89~89 (V)
30W	43W	43W	35W	46W	145W	158W	220W	
Stereo Output 2Wx2 Speaker	Stereo Output 2Wx2 Speaker	Stereo Output 2Wx2 Speaker	Stereo Output 2Wx2 Speaker	Stereo Output 2Wx2 Speaker	Stereo Output 2Wx2 Speaker	Stereo Output 2Wx2 Speaker	Stereo Output 2Wx2 Speaker	Stereo Output 2Wx2 Speaker
MPEG1/2/4, JPEG, MP3	MPEG1/2/4, JPEG, MP3	MPEG1/2/4, JPEG, MP3	MPEG1/2/4, JPEG, MP3	MPEG1/2/4, JPEG, MP3	MPEG1/2/4, JPEG, MP3	MPEG1/2/4, JPEG, MP3	MPEG1/2/4, JPEG, MP3	MPEG1/2/4, JPEG, MP3
CF/SM/Miniature SMMMC/SDMS card	CF/SM/Miniature SMMMC/SDMS card	CF/SM/Miniature SMMMC/SDMS card	CF/SM/Miniature SMMMC/SDMS card	CF/SM/Miniature SMMMC/SDMS card	CF/SM/Miniature SMMMC/SDMS card	CF/SM/Miniature SMMMC/SDMS card	CF/SM/Miniature SMMMC/SDMS card	CF/SM/Miniature SMMMC/SDMS card
Yes	Yes	Yes	Yes	Yes	Yes	Yes	Yes	Yes
	R17LE00-OFM1MP	W17LE00-OFA1MP	R19LE00-OFM1MP	W19LE00-OFM1MP	W20LE00-OFA3MP	W26LE00-OFA2MP		



Network Player

Basic Features

Network Player automatically download the content according to a predefined playlist through network from the management software. It features an excellent solution for easy installation and an easy-to-use network operation.



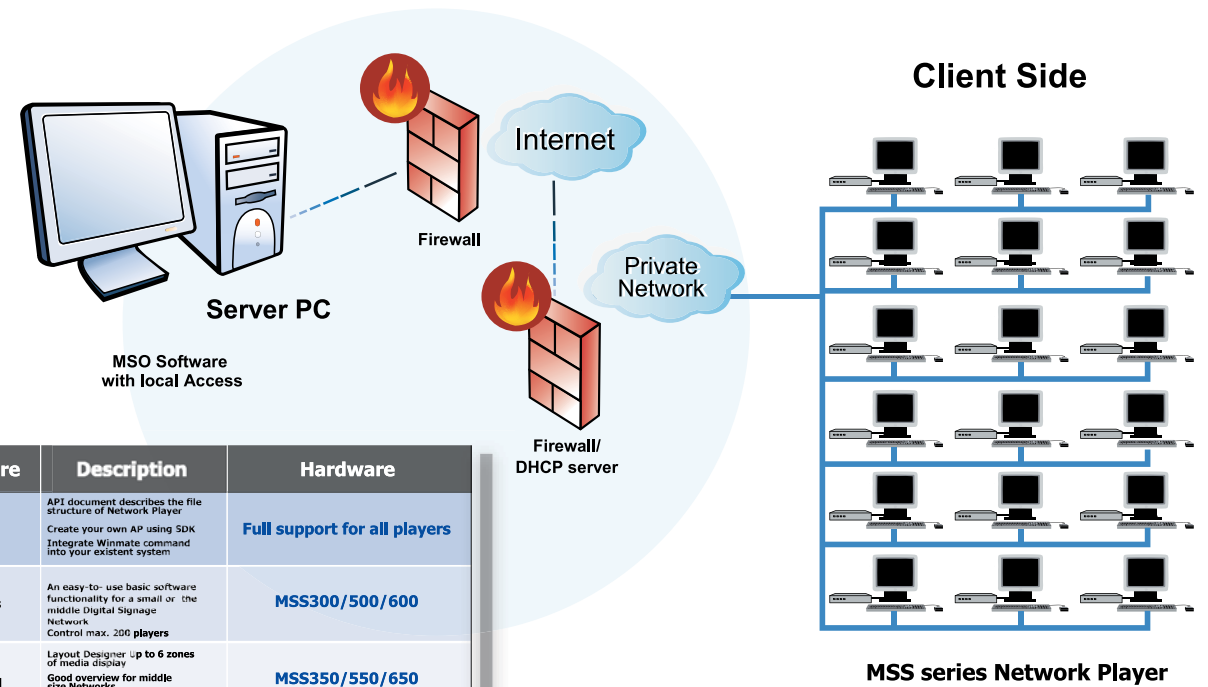
Model Number	MSS 300	MSS 350	MSS 500	MSS 550	MSS 600	MSS 650
Mechanical	BOX		BOX		BOX	
PWR Consumption typ. normal	5W		5W		5W	
Audio Input	N/A		N/A		R & L RCA connector	
Video Input	N/A		N/A		S-video/ CVBS/Component	
Video Output	DVI-I/VGA/S-video/CVBS		DVI-I/VGA/S-video/CVBS		DVI-I/VGA/S-video/CVBS	
Audio Output	Stereo RCA 2Wx2		Stereo RCA 2Wx2		Stereo RCA 2Wx2	
Storage Media	512 MB CF (Default) 40G 2.5" HDD (Optional)		1 G CF (Default) 40G 2.5" HDD (Optional)		1 G CF (Default) 40G 2.5" HDD (Optional)	
Supported Media Format	MPEG1, MPEG2, MPEG4/ JPEG, BMP, PNG		MPEG1, MPEG2, MPEG4, WMV9 / JPEG, BMP, PNG		MPEG1, MPEG2, MPEG4, WMV9 / JPEG, BMP, PNG	
Content Update	RJ45 Ethernet/USB flash drive 80.211b/g WLAN (optional)		RJ45 Ethernet/USB flash drive 80.211b/g WLAN (optional)		RJ45 Ethernet/USB flash drive 80.211b/g WLAN (optional)	
Com Port (optional)	RS232c		RS232c		RS232c	
Media Support	Standard Definition (SD 480p/576p)		High Definition (HD 1080p)		High Definition (HD 1080p)	
Management Software	MSO Plus	MSO Gold	MSO Plus	MSO Gold	MSO Plus	MSO Gold



- ❖ Embedded Media Processor Playing Engine
- ❖ Hassle-free content update via Ethernet, no need to change memory card
- ❖ Flexible Layouts (up to 6 Zones)
- ❖ Different level of management software packages to support different level of management functions
- ❖ Mixed networks with different panel sizes
- ❖ Powerful group management
- ❖ Real-time player status overview

Network Player Package Bundles

All our Network Players are sold with management software as package bundles. Choose the suitable solution for your application.



Software	Description	Hardware
SDK API	API document describes the file structure of Network Player Create your own AP using SDK Integrate Winmate command into your existent system	Full support for all players
MSO Plus	An easy-to-use basic software functionality for a small or the middle Digital Signage Network Control max. 200 players	MSS300/500/600
MSO Gold	Layout Designer up to 6 zones of media display Good overview for middle size Networks Control max. 2000 players	MSS350/550/650

MSO Software

Basic Features

- ❖ Fully control via Ethernet with player status overview
- ❖ Playing log report (playing proof)
- ❖ Create Groups, Schedules, Events
- ❖ Select Layouts, Playlists, and so on
- ❖ Easy-to-use Drag & Drop media collection
- ❖ Maintenance Functions (Update, Transfer, TimeSync, Reboot)
- ❖ Network Settings of the Players
- ❖ Automatic Media Synchronization
- ❖ Preview function for media files, layouts and playlists

MSO Plus (Suggested:1-200 Players)

- Key Features:
- Very Easy to use
 - Simple Digital Signage Management
 - 11 Layouts for easy Content creation
 - Event Management for Playlist preparation
 - Single User access (Windows XP)



MSO Gold (Suggested:1-2000 Players)

- Key Features:
- Optimized Overview for more Players
 - Report Manager
 - Group Management
 - Portrait Mode Support
 - Individual Layout Designer
 - Single User access (Windows XP)



Depends on your application and level of management control, we have created different MSO software for you to choose from.

Content planning

- ❖ Picture Formats Support : JPG, BMP, PNG
- ❖ Multimedia Support of : MPEG-1, MPEG-2, MPEG-4, WMV9, MP3 Standards
- ❖ Playlist and Content preparation, scheduling and distribution
- ❖ Multiple Layouts for choosing Message Ticker (also RSS-feed), Banner & Movie Zone
- ❖ Group Management & Preview function

Installation and Monitoring

- ❖ Network & Device Management
- ❖ Easy Installation with Activemove Connection
- ❖ Smart Background Updating
- ❖ Media File Encryption for best Protection
- ❖ Installation Mode for easy Network Setup
- ❖ Smart Device Detect for Player Recognition

Accounting & Controlling

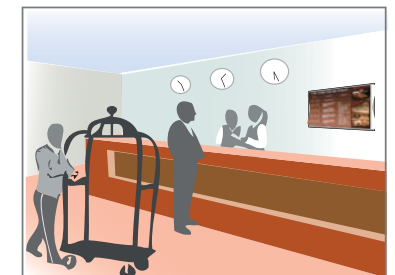
- ❖ Smart Resume for lossless transfers
- ❖ Scheduled Update / Automatic Time Sync
- ❖ Network Player status overview
- ❖ Media Sync Log-Files
- ❖ Playing proof by Group/Player/File in each Player

MSO Plus V.S. MSO Gold

All our Network Players are sold with management software as package bundles. Choose the suitable solution for your application.

Software Comparison Table

Feature	MSO Plus	MSO Gold
Group Management	✓	✓
Program / playlist Control	✓	✓
Program Scheduling	✓	✓
Picture Rotation	✓	✓
Ticker Transition Effect	✓	✓
Adjustable Ticker Speed	✓	✓
Firmware Update via USB / LAN	✓	✓
Preview Window	✓	✓
Get Client / Group Log	✓	✓
Clock Display	✓	✓
Realtime Client Status	✓	✓
Auto Media Update	✓	✓
Auto Time Sync	✓	✓
Client IP mode (Fixed / DHCP)	✓	✓
Client Configuration via USB / LAN	✓	✓
Realtime RSS Feed	✓	✓
Suggested No. of. players	max. 200	max. 2000
Multiple Zones Display	max. 3 Zones	max. 6 Zones
Background Picture Setting	N / A	✓
User-defined Layout	N / A	✓
User-defined Trigger Event	N / A	✓
User-defined Download Date	N / A	✓
Auto Playing Log Download	N / A	✓



Highlighted Features for Network Player Series

Winmate continuously develops new functions for all Network Players, according to customer's feedback and application needs. You can always count on Winmate to WIN projects.

RSS Feed Live Message

RSS is a family of Web feed formats used to publish frequently updated content such as blog entries, news headlines or podcasts. RSS makes it possible for people to keep up with their favorite web sites in an automated manner that's easier than checking them manually. Winmate digital signage management software (MSO Plus/MSO Gold) continuously read strings from either text file or RSS URL, converts them into graphics and sends it to the Network Player for display.

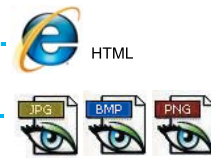
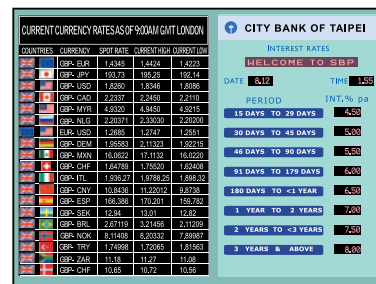


Real-time Message



HTML Bulletin

MSO Gold can continuously read HTML source through Ethernet or graphic files from local server, then converts source into graphics and shows them on the display in real time. HTML Bulletin is very useful for currency exchange board in banks, waiting areas in bus station, flight timetables in the airports, bulletin in schools, ballroom reservations in hotel lobbies and many more.



read from source

Value-Added Features

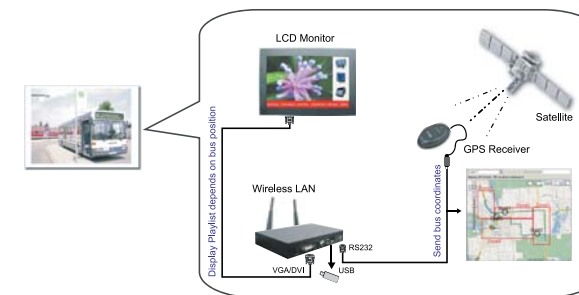
Winmate continuously develops new functions for Network Players, according to customer's feedback and application needs. You can always count on Winmate to WIN projects.

GPS Integration

MSO Gold allows users to define playlist for a geographic area. G-mouse is a device receiving microwave signal from satellites and continuously provide information such as location, speed, direction, and time. With the help of Global Positioning System, the Network Player will play different playlists according to pre-defined location setting. Applications such as station information display in a moving bus and advertising in a taxi, the Network Player makes your advertising everywhere around the world.

Special Features of GPS Solution:

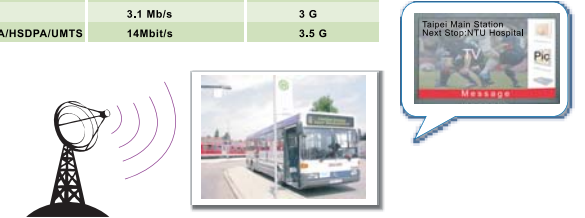
- Player will play the associated playlist according to its location
- MSO software downloads the GPS & Billing Log file for analysis and reference
- Provide power to G-mouse via RS232 Interface for reliable cable connection
- Support of any "G-mouse" following the NMEA 183 Standard
- Support of GGA and RMC Standard Protocols



3G/3.5G Integration

All series of Winmate Network Player support the use of 3G and 3.5G Router for mobile communication. With this step, the Winmate Digital Signage goes to totally Mobile for Applications like: Taxi Advertising, Public Bus, Train, and Kiosks. The high speed of 3G and 3.5 G makes this technology become very important and reliable to transfer the content to the local Player. This will give you the freedom to choose any 3G Router and any Modem card, which your CSP (Cellular Service Provider) maybe bundle with a contract and SIM card.

Technology	Max. Downlink speed	GSM Generation
GSM CSD	9.6kbit/s	2 G
HSCSD downstream	43.2kbit/s	2 G
GPRS downstream	80 kbit/s	2.5 G
EDGE downstream	236.8kbit/s	2.75 G
EV-DO	3.1 Mb/s	3 G
W-CDMA/HSDPA/UMTS	14Mbit/s	3.5 G



GPS module with Media Signage Installed

Special Features of 3G/3.5G Solution:

- High speed download speed up to 14Mbps
- No need to change existing design of Network Player
- Update media anywhere when cellular service is available

Share Our Success around the World

Winmate has been working very closely with our customers for years, and helping our customers build their reputation and success. We invite you to share the pleasure of our success.

Advertising in Supermarket

Where: Sweden
Product Installed: 7" Network Player Plus



Public Bus with Entertainment & Advertising

Where: Brazil
Product Installed: MSS300



Advertising in Retail Store

Where: South Africa
Product Installed: 32" Network Player



Company Image in Reception

Where: Beijing China
Product Installed: MSS300



Tradeshow Information in VIP Lounge

Where: 2006 Computex Taipei
Product Installed: 42" Network Player



Menu in Fastfood Chain

Where: Australia
Product Installed: MSS300



Integrated Network Player Plus

The integrated Network Player is very slim and suitable for applications which have limited space. It also eliminates the cabling issue and makes the installation much easier.



Size(inches)	7"	10.4"	15"	17"	19"	20.1"	26"	32"	42"
Model Number	W07XS01-CHA1PP	R10LS01-CHM2PP	R15LS01-CHC3PP	R17LS01-CHM1PP	R19LS01-CHM1PP	W20LS01-CHA3PP	W26LS01-CHA2PP	W32LS01-CHA1PP	W42LS01-CHL1PP
Mechanical	Chassis	Chassis	Chassis	Chassis	Chassis	Chassis	Chassis	Chassis	Chassis
Panel Pixel Format	480x234	800x600	1024x768	1280x1024	1280x1024	1366x768	1366x768	1366x768	1366x768
Brightness(cd/m2)	400	400	250	300	300	450	500	500	250
Contrast Ratio (Typ.)	300:1	500:1	500:1	800:1	800:1	600:1	1500:1	1500:1	1000:1
Viewing Angles CR=10 (Typ.)	-65~65 (H); -65~40 (V)	Stereo RCA 2Wx2	-65~65 (H); -55~65 (V)	-80~80 (H); -80~80 (V)	-80~80 (H); -80~80 (V)	-80~80 (H); -60~80 (V)	-88~88 (H); -88~88 (V)	-89~89 (H); -89~89 (V)	-89~89 (H); -89~89 (V)
PWR Consumption typ. normal	20W	23W	41W	48W	35W	93W	153W	158W	158W
Video & Audio I/O	Stereo RCA 2Wx2	Stereo RCA 2Wx2	Stereo RCA 2Wx2	Stereo RCA 2Wx2	Stereo RCA 2Wx2	Stereo RCA 2Wx2	Stereo RCA 2Wx2	Stereo RCA 2Wx2	Stereo RCA 2Wx2
Storage Media	CF(512MB)	CF(512MB)	CF(512MB)	CF(512MB)	CF(512MB)	CF(512MB)	CF(512MB)	CF(512MB)	CF(512MB)
Supported Media Format	MPEG1 MPEG2 MPEG4/JPEG.BMP	MPEG1 MPEG2 MPEG4/JPEG.BMP	MPEG1 MPEG2 MPEG4/JPEG.BMP	MPEG1 MPEG2 MPEG4/JPEG.BMP	MPEG1 MPEG2 MPEG4/JPEG.BMP	MPEG1 MPEG2 MPEG4/JPEG.BMP	MPEG1 MPEG2 MPEG4/JPEG.BMP	MPEG1 MPEG2 MPEG4/JPEG.BMP	MPEG1 MPEG2 MPEG4/JPEG.BMP
Content Update	NetworkingBy Ethernet(WLAN)	NetworkingBy Ethernet(WLAN)	NetworkingBy Ethernet(WLAN)	NetworkingBy Ethernet(WLAN)	NetworkingBy Ethernet(WLAN)	NetworkingBy Ethernet(WLAN)	NetworkingBy Ethernet(WLAN)	NetworkingBy Ethernet(WLAN)	NetworkingBy Ethernet(WLAN)
VESA Mounting	Yes	Yes	Yes	Yes	Yes	Yes	Yes	Yes	Yes
Mechanical Option	W07XS01-OFA1PP	R10LS01-OFM2PP	R15LS01-OFM3PP R15LS01-PMC3PP	R17LS01-OFM1PP R17LS01-PMC1PP	R19LS01-OFM1PP R19LS01-PMC1PP	W20LS01-OFM3PP W20LS01-PMC3PP	W26LS01-OFM2PP	W32LS01-OFM1PP	W42LS01-CHL1PP



Join The New Trend in the Market

