



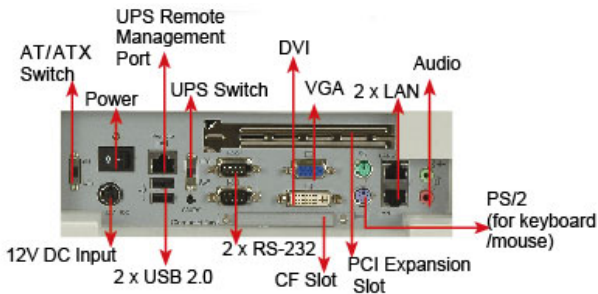
The Best Integration with Medical Cart

The built-in battery provides the UPS (Uninterruptible Power Supply) function, ensuring the POC-3174B reliably used for medical cart application. The built-in battery allows standby power for data backup and management under sudden power shut-down situation, increasing redundancy for real-time medical record processing. The unique AUPS software facilitates real-time battery monitoring requirement. The network remote management software enables power control for each terminal POC-3174B from a central station, reducing the maintenance cost for the end user.

Download	
+	Datasheet
+	Catalog

Features

- 17" all-in-one medical panel PC
- High performance Intel Core 2 Duo CPU support
- Built-in battery for UPS function
- Smart AUPS battery monitoring utility
- NetWork remote management advantage
- User-friendly touch screen



Powerful Management by UPS Function

The built-in Li-Ion battery provides the UPS function, avoiding unexpected power disruption which causes data loss or fatalities. The smart AUPS software allows easy remote management via LAN connection and the battery monitoring functions, including "current power source", "battery status", "charging status" and "battery life monitoring".

Easy Remote Management

- Network Remote Management Everywhere



- Network Remote Management Software

Board Configuration

Setting IP address and enable DHCP



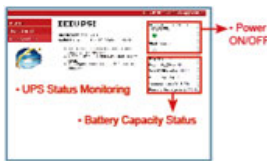
Send-E-Mail

Send battery status by e-mail



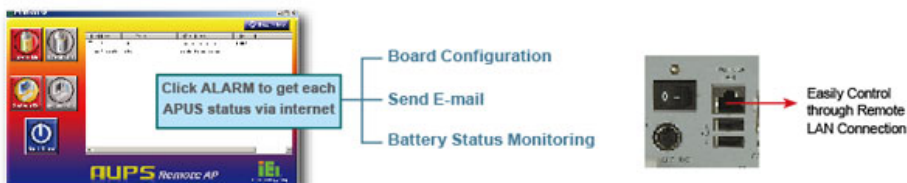
Battery Status Monitoring

Display battery information & Remotely control system on/off via web interface



- Easy Management

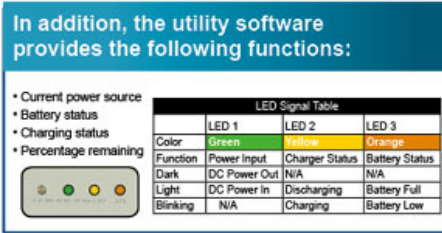
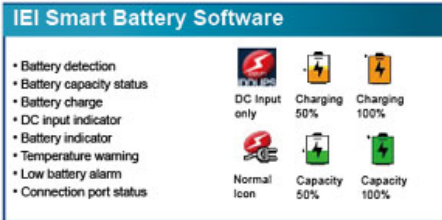
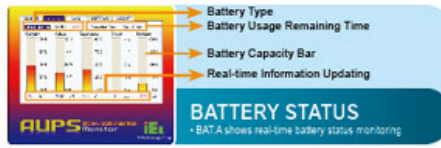
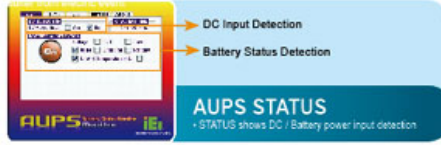
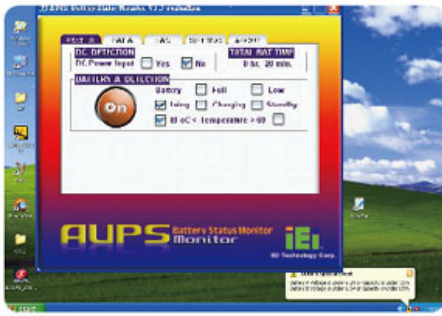
IEI provides software utility and application program for users to easily get the AUPS sub-system real time status and to remotely control system power on/off from anywhere and anytime with internet connection. Remote management software could setup either static IP address or through DHCP server to get an IP address for the management tool.



Real-time UPS Status Monitoring

- Battery Monitoring Utility

-Monitoring the most critical battery functions on the local machine



Meanwhile, IEI also provides AUPS API SDK and command list for customer programming under DOS or Linux system

AUPS API Content


```

Init()
AUPS Close()
WriteCommand()
ReadCommand()
Error Code Definition()
                    
```


AUPS API SDK

```

aUPS API.pdf
aUPSAPI.JJ
aUPSAPI.h
aUPSAPI.lib
                    
```



Linux



MS
DOS

AUPS API SDK/Content

Powerful Expansion Advantage

The POC-3174B has a PCI slot and an Express Card.54 slot, allowing powerful system expansion capabilities. The expansion slots enable easy connection with video capture cards, communication modules and card reading modules.

Value-Added Network Connection Advantage

The POC-3174B has two Gigabit Ethernet LAN connectors and wireless 802.11a/b/g/n network connections, enabling real-time and reliable medical record transmission.



Super Connectivity

The POC-3174B supports numerous I/O interfaces, enabling connections with medical devices, such as RFID readers, barcode readers and printers. The POC-3174B is a perfect medical information terminal.

IP 64 Front Panel for Best Reliability

The POC-3174B is designed with IP64 dustproof and waterproof front panel, allowing easy cleaning with disinfectant without harming the panel itself.

Reliable Touch Screen Design

The POC-3174B is equipped with reliable 5-wire resistive type touch screen. The touch screen makes medical order entry screen. The touch screen makes medical order entry much easier when used as an information terminal.



Optical Drive for Image burning Advantage

The POC-3174B has an optical drive at the side of the panel, allowing real-time image burning purpose. The built-in optical drive makes POC-3174B a perfect image processing terminal.

Optical Drive and Express Card Slot



Specifications

Model	POC-3174B-A320	POC-3174B-A330	Model	POC-3174B-A320	POC-3174B-A330
CPU	Intel® Core 2 Duo Socket P (T7500-2.2G/Celeron® M 550-2.0G)	2.0 GHz Intel® Pentium® M 760	Touch screen	Resistive 5-wire (RS-232 interface)	
Chipset	Intel® GME965 + ICH8M	Intel® 915GM + ICH6M	Wireless (Mini PCIe interface)	802.11 a/b/g/n Intel® 4965	
RAM	2 x 2.0 GB (max.) DDR2 SO-DIMM (system max. 4GB)	2 x 1.0 GB (max.) DDR2 SO-DIMM (system max. 2GB)	I/O Ports	2 x USB 2.0 3 x RS-232 2 x Gigabit Ethernet (GbE) 1 x VGA 1 x DVI 2 x Audio 2 x PS2 1 x AC Power inlet connector	
LCD Size	17"	17"	Expansion Slot	1 x PCI 1 x Express Card/54 Slot	
Resolution	1280 x 1024		OSD Function	Five bottom panel buttons (LCD On/off, Light +, -, Audio +, -)	
Speakers	2 x 3W AMP		AUPS Function	Yes (Battery 3800mAH)	
Drive Bay	1 x 2.5" SATA HDD 1 x IDE CF card 1 x Slim Type DVD Combo Drive		LED Function	Four LED on front panel for System/ Adapter/ Battery/ UPS function	
Power In	DC 12V input		Safety & EMI	UL60601-1, EN60601-1, CCC, CE (EN60601-1-2), FCC Parts 18	
Power Adapter	Medical Grade, AC 100V~240V input to DC 12V output		Operation Temperature	0°C ~ 40°C	
IP level	IP64 on front panel		Net Weight (kg)	8.0	8.0
Dimensions (mm) (W x H x D)	432 x 374 x122				

Ordering information

Part No.	Description
POC-3174B-A320-T7500/2GB/80GB	17" medical panel PC, with 2.2GHz Intel® Core 2 Duo(T7500) CPU, 2GB DDR2 SO-DIMM RAM, 80GB SATA HDD, DVD combo, wireless 802.11 a/b/g/n , touch Screen, battery 3800mAH and AC to DC power adapter, RoHS
POC-3174B-A320-CM550/2GB/80GB	17" medical panel PC, with 2.0 GHz Celeron® M (Celeron® M 550) CPU, 2GB DDR2 SO-DIMM RAM, 80GB SATA HDD, DVD combo, wireless 802.11 a/b/g/n , touch Screen, battery 3800mAH and AC to DC power adapter, RoHS
POC-3174B-A330-PM760/1GB/80GB	17" medical panel PC, with 2.0 GHz Pentium® M (Pentium® M 760) CPU, 1GB DDR2 SO-DIMM RAM, 80GB SATA HDD, DVD combo , wireless 802.11 a/b/g/n , touch Screen, battery 3800mAH and AC to DC power adapter , RoHS

Options

ARM	ARM-31-RS
STAND	STAND-300SW-RS

Copyright© 2007; IEI Technology Corp. All Rights Reserved.

This site is bestviewed in 1024 x 768 true color with IE5.0+ or Netscape 7.0